

Spare parts list

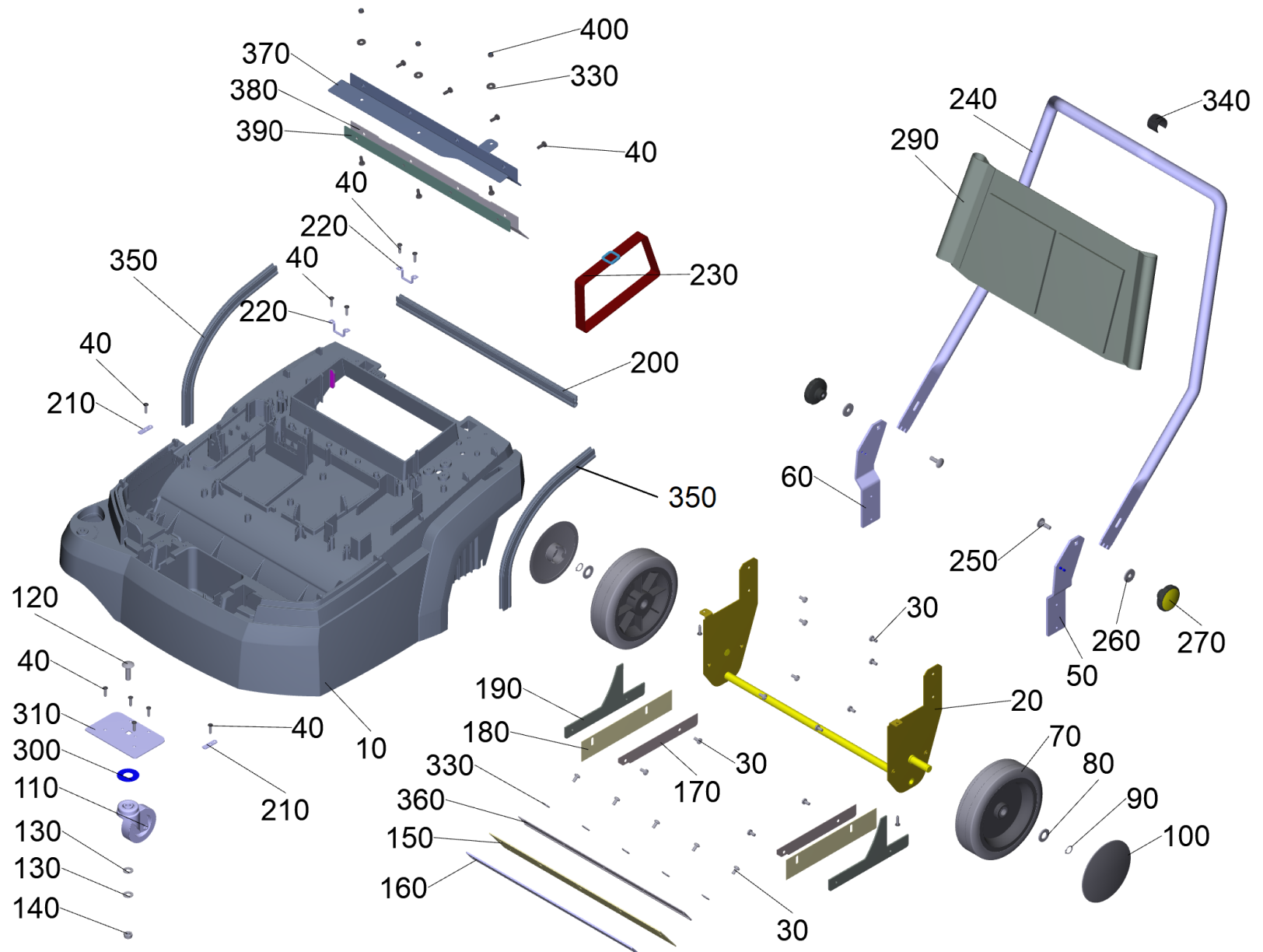
(1.517-302.0) CVS 65/1 Bp Pack *KNA

Table of contents

CVS 65/1 Bp Pack *KNA (1.517-302.0)	3
10 Basic machinery CVS 65/1	4
20 Sweep roller chest CVS 65/1	7
30 Retainer accumulator sweeper roll adjustment	9
40 Blower CVS 65/1	11
50 Side broom cpl.	16
60 Electronics CVS 65/1	18
70 Cover cpl.	20
80 Sweep tank cpl.	22
110 Conversion kit frame CVS 65/1 (2.882-078.0)	24
120 Conversion kit retainer accumulator CVS 65/1 (2.882-082.0)	26
130 Conversion kit leading contour (2.882-092.0)	28

CVS 65/1 Bp Pack *KNA (1.517-302.0)

POS	Article no.	Description	Quantity	Unit
10		Basic machinery CVS 65/1	1	PC
20		Sweep roller chest CVS 65/1	1	PC
30		Retainer accumulator sweeper roll adjustment	1	PC
40		Blower CVS 65/1	1	PC
50		Side broom cpl.	1	PC
60		Electronics CVS 65/1	1	PC
70		Cover cpl.	1	PC
80		Sweep tank cpl.	1	PC
90	2.445-075.0	Battery Power+ 36/75 *CUL	1	PC
100	2.445-053.0	Battery charger Battery Power+ 36/60 *CUL	1	PC
110	2.882-078.0	Conversion kit frame CVS 65/1	1	PC
120	2.882-082.0	Conversion kit retainer accumulator CVS 65/1	1	PC
130	2.882-092.0	Conversion kit leading contour	1	PC
140	2.884-358.0	Spare parts set bag	1	PC

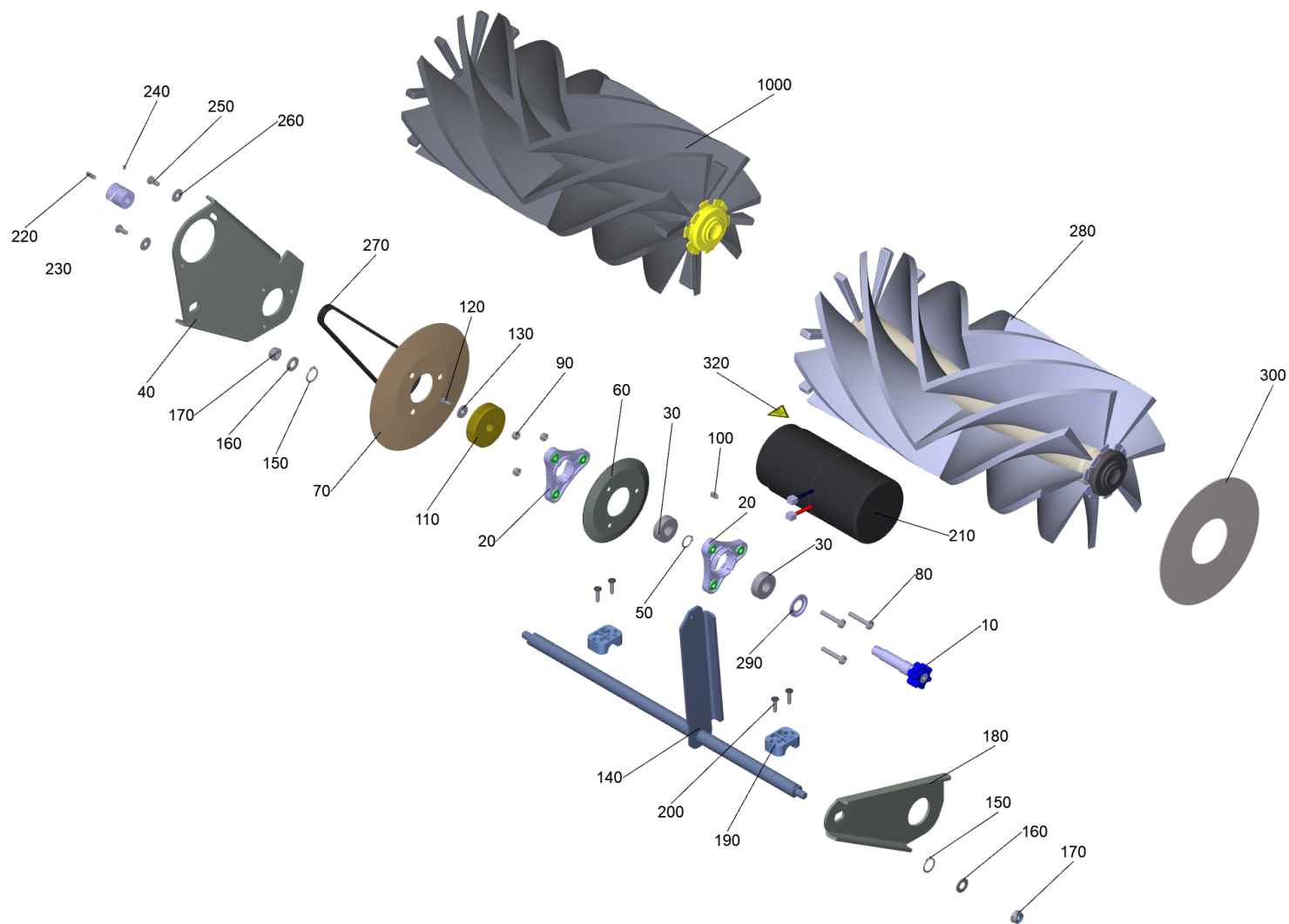


10 Basic machinery CVS 65/1

POS	Article no.	Description	Quantity	Unit
10	5.032-191.0	Frame	1	PC
20	4.040-964.0	Rear axle cpl.	1	PC
30	7.306-090.0	Screw M6x16 -8.8-P2R (In6Rd)	24	PC
40	7.303-108.0	Screw 5x20 -10.9-R2R (In6Rd)	12	PC
50	4.040-961.0	Shearing shackle connection left	1	PC
60	4.040-962.0	Shearing shackle connection right	1	PC
70	6.435-412.0	Wheel D 200	2	PC
80	7.312-028.0	Washer 14-200HV-A2K ISO 7089	2	PC
90	7.343-004.0	Locking ring 15x1-FST-PHR DIN 471	2	PC
100	6.435-860.0	Wheel cap neutrally BR/BD 40/25 C	2	PC
110	6.966-068.0	Castor	1	PC
120	7.303-173.0	Saucer-head screw M10x45 -St-A0P DIN 603	1	PC
130	7.312-005.0	Washer 10-200HV-A3E ISO 7089	2	PC
140	7.311-423.0	Hexagon nut M10 -04-A2E DIN 985	1	PC
150	5.032-117.0	Skirting front	1	PC
160	5.097-981.0	Plate skirting front	1	PC
170	5.096-425.0	Plate bracket skirting	2	PC
180	5.032-182.0	Skirting side	2	PC
190	5.097-944.0	Sheet metal component skirting sweep roller chest	2	PC
200	5.365-081.0	Seal 485 mm	1	PC
210	5.096-413.0	Plate fixing hinge	2	PC
220	5.097-968.0	Sheet metal component fixing strap	2	PC
230	6.371-152.0	Strap velcro strip	1	PC
240	5.128-444.0	Shearing shackle CVS 65/1	1	PC
250	7.303-194.0	Saucer-head screw M8x25 -St-A0P DIN 603	2	PC
260	7.312-261.0	Washer 8 -100HV-A3E ISO 7094	2	PC
270	6.321-177.0	Turning knob yellow D55mm	2	PC
290	5.032-196.0	Mains accessories shearing shackle	1	PC
300	5.115-047.0	Washer castor	1	PC
310	5.098-401.0	Plate reinforcement front	1	PC
330	7.312-276.0	Washer 6 -200HV-A2E ISO7093-1	16	PC
340	6.373-867.0	Clamp	1	PC
350	5.365-082.0	Seal 405 mm	2	PC

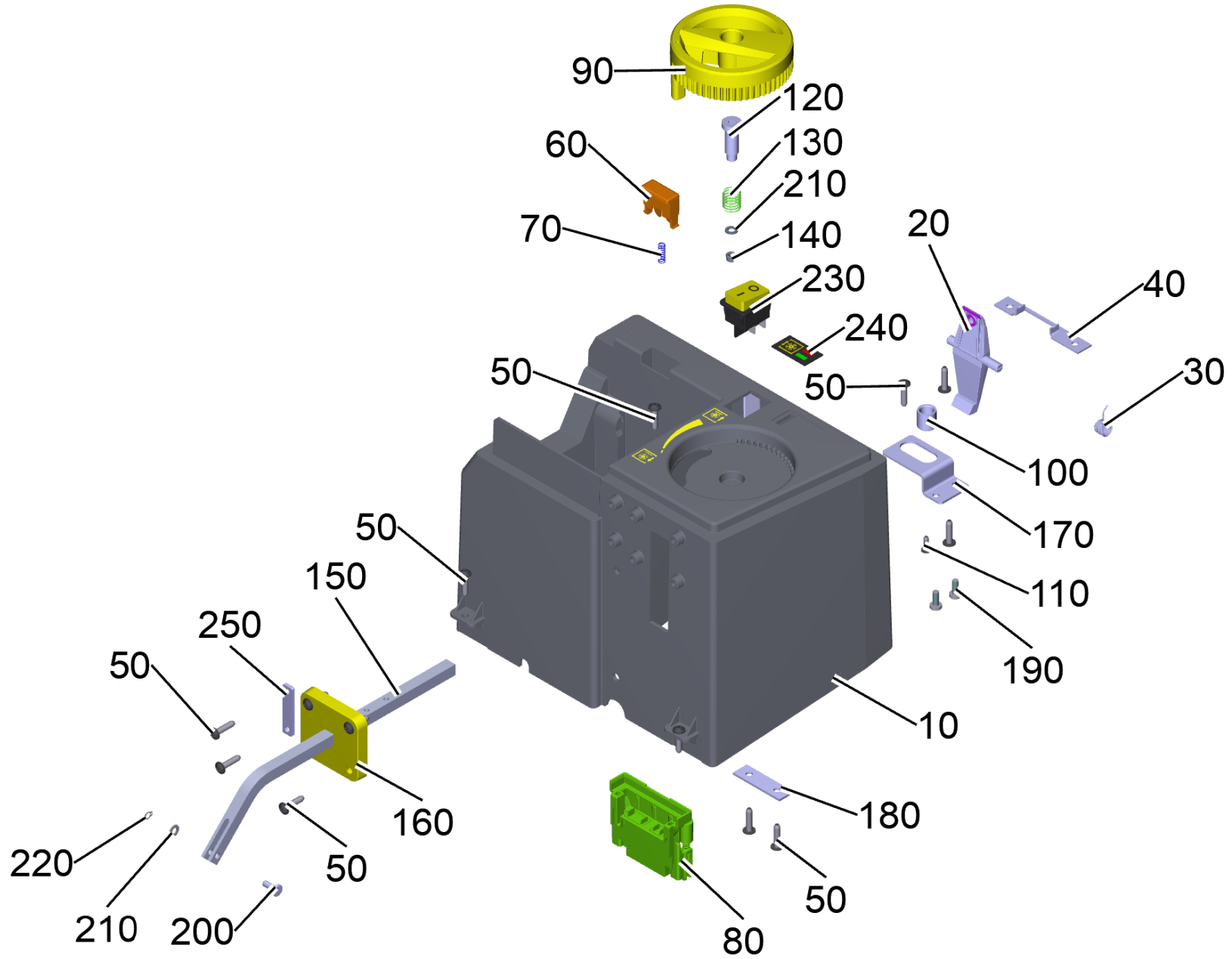
10 Basic machinery CVS 65/1

POS	Article no.	Description	Quantity	Unit
360	5.098-582.0	Sheet metal component envelope	1	PC
370		Sheet metal component baffle plate	1	PC
380		Skirting dirt	1	PC
390		Plate lip	1	PC
400	7.311-425.0	Hexagon nut M6-04-A2E DIN 985	3	PC



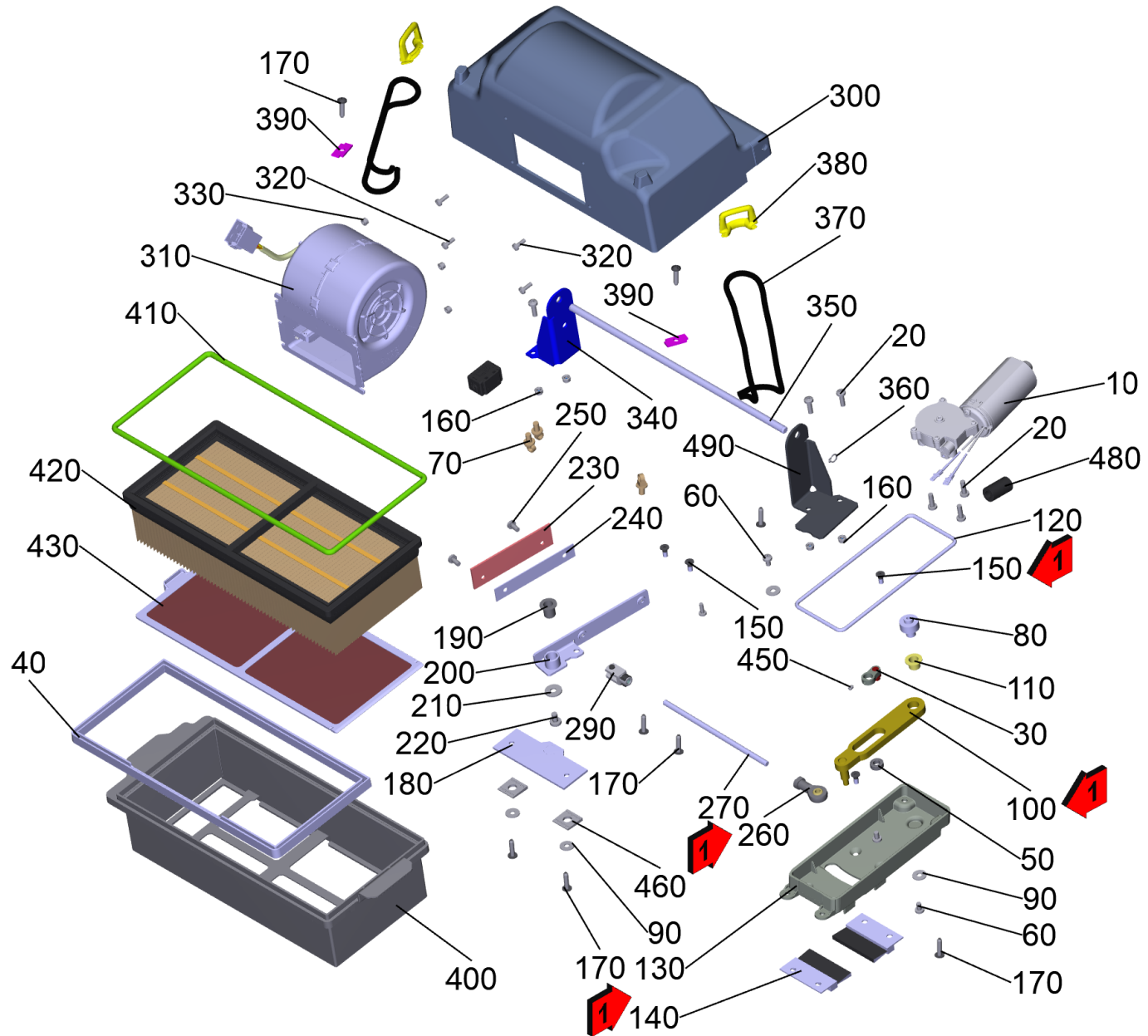
20 Sweep roller chest CVS 65/1

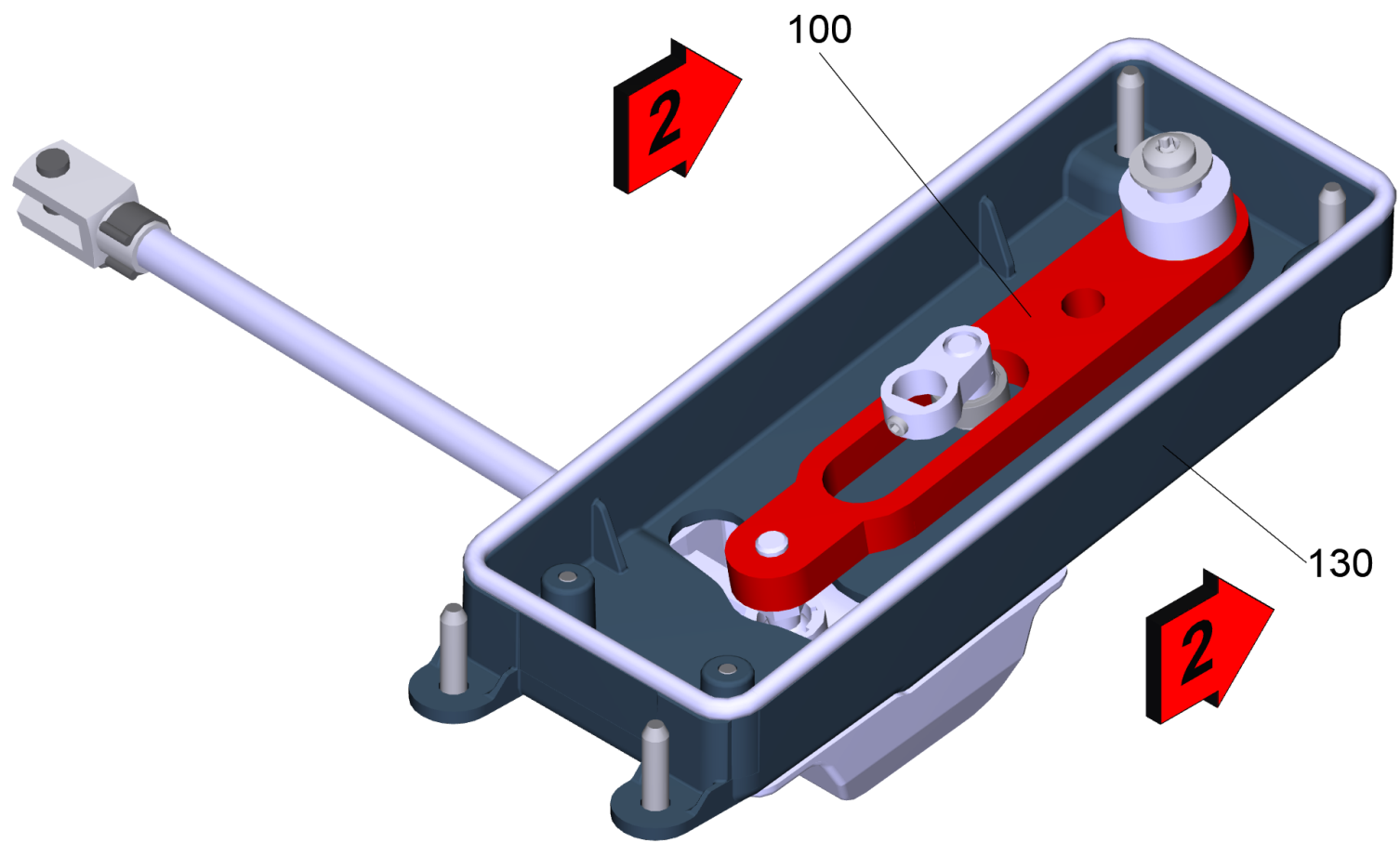
POS	Article no.	Description	Quantity	Unit
10	5.474-004.0	Star carrier transmission reversing rolling mill	1	PC
20	5.253-026.0	Bearing flange	2	PC
30	4.401-198.0	Ball bearing 6202-2RS -Wälzl.St DIN 625	2	PC
40	5.097-942.0	Sheet metal component lever right	1	PC
50	7.343-004.0	Locking ring 15x1-FST-PHR DIN 471	1	PC
60	5.032-206.0	Guide seal sweep roller chest	1	PC
70	5.032-202.0	Seal reversing rolling mill right	1	PC
80	7.306-118.0	Screw M 6x35 -8.8-P2R (In6Rd)	3	PC
90	7.311-425.0	Hexagon nut M6-04-A2E DIN 985	3	PC
100	7.318-084.0	Parallel key 5x5x12 -C45K DIN 6885-1	1	PC
110	5.625-039.0	Belt pulley reversing rolling mill d=57,5	1	PC
120	7.306-071.0	Screw M5x10 -8.8-R2R (In6Rd)	1	PC
130	7.312-264.0	Washer 5-100HV-A3E ISO 7094	1	PC
140	4.040-982.0	Lever cpl.	1	PC
150	7.343-018.0	Locking ring 18x1,2-Rf-St DIN 471	2	PC
160	7.312-116.0	Washer 10 -200HV-ZNSH ISO 7089	2	PC
170	7.311-143.0	Hexagon nut M10-08-St-200HV-ZFSHL DIN 985	2	PC
180	5.097-943.0	Sheet metal component lever left	1	PC
190	6.533-438.0	Pipe clamp 18	1	PC
200	7.303-108.0	Screw 5x20 -10.9-R2R (In6Rd)	4	PC
210	6.613-576.0	Motor transmission reversing rolling mill	1	PC
220	7.318-007.0	Parallel key 4x4x16-C45K DIN 6885	1	PC
230	7.777-999.0	Stockpiling discontinued	1	PC
240	7.777-999.0	Stockpiling discontinued	1	PC
250	7.304-300.0	Hexagonal head screw M6x16 -8.8-GE3A/VL	2	PC
260	7.312-276.0	Washer 6 -200HV-A2E ISO7093-1	2	PC
270	6.348-058.0	Ribbed band 4PJ 559	1	PC
280	2.886-002.0	Reversing rolling mill antistatic packaged	1	PC
290	6.363-406.0	Joint ring 6202 ZAV	1	PC
300	5.032-201.0	Seal reversing rolling mill left	1	PC
320	5.384-004.0	Label hot do not touch	1	PC
1000	4.762-686.0	Reversing rolling mill tennis court packaged	1	PC

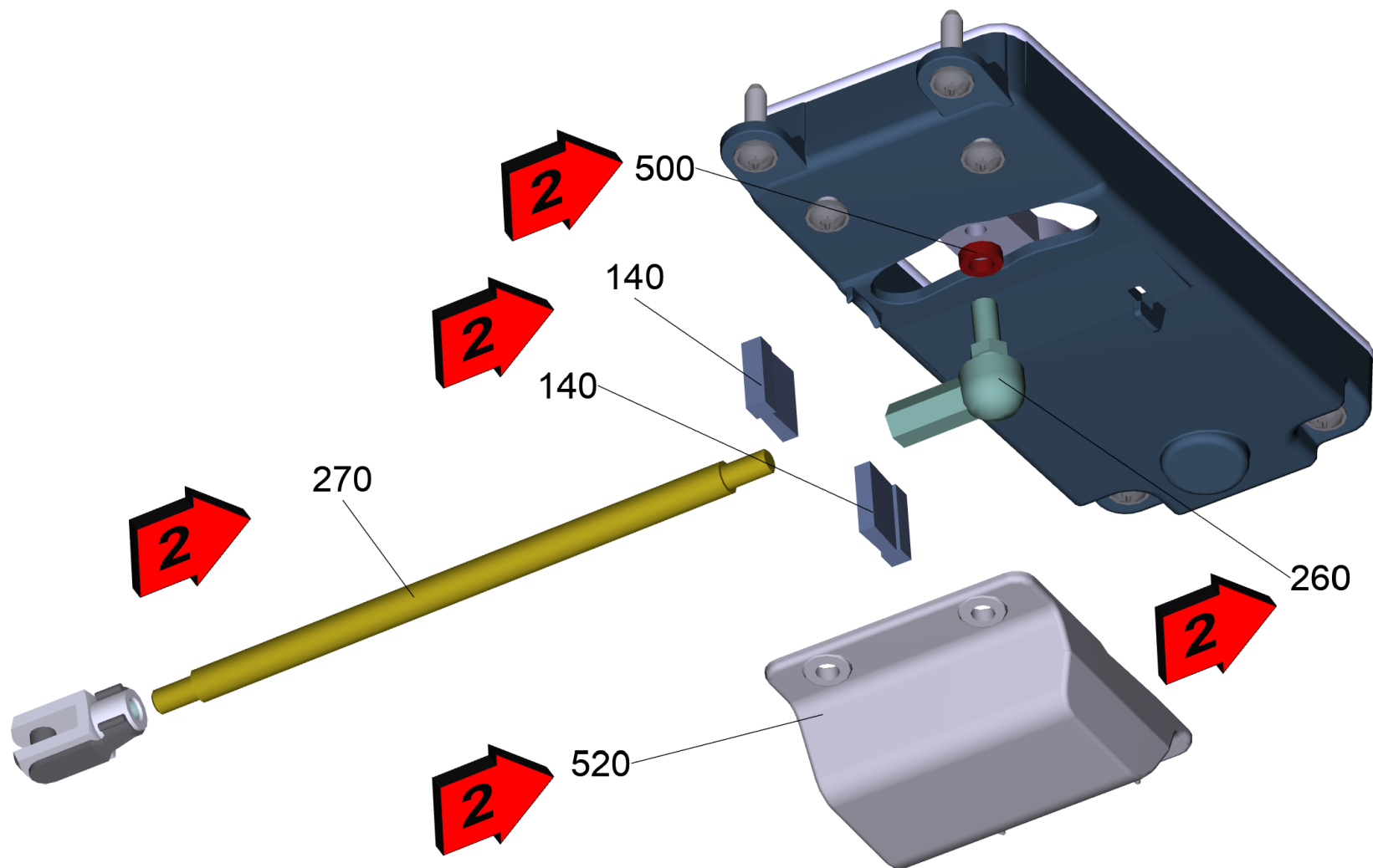


30 Retainer accumulator sweeper roll adjustment

POS	Article no.	Description	Quantity	Unit
10	5.032-185.0	Retainer accumulator sweeper roll adjustment	1	PC
20	5.036-948.0	Lock element battery	1	PC
30	6.330-264.0	Leg spring	1	PC
40	5.097-962.0	Sheet metal component locking part accumulator	1	PC
50	7.303-108.0	Screw 5x20 -10.9-R2R (In6Rd)	15	PC
60	5.324-203.0	Unlocking button battery	1	PC
70	6.330-160.0	Pressure spring	1	PC
80	4.051-352.0	Contact carrier ejector BP	1	PC
90	5.322-459.0	Handle adjustment reversing rolling mill	1	PC
100	5.112-043.0	Bush handle	1	PC
110	7.303-106.0	Screw 4x12 -10.9-R2R (IN6RD)	1	PC
120	5.105-332.0	Bolt handle	1	PC
130	5.332-207.0	Helical spring	1	PC
140	7.311-421.0	Hexagon nut M 5-04-A2E DIN 985	1	PC
150	5.129-794.0	Lever pivot point	1	PC
160	5.032-190.0	Bearing square	1	PC
170	5.097-961.0	Sheet metal component turning knob	1	PC
180	5.096-400.0	Plate bracket lever	1	PC
190	7.306-394.0	Screw M5x12 -8.8-ZNBHL ISO 14583	2	PC
200	5.316-026.0	Bolt 5x13	1	PC
210	7.312-052.0	Washer 5 -A2 ISO 7089	2	PC
220	7.343-041.0	Locking ring 5x0,6-FST-PHR DIN 471	1	PC
230	6.630-468.0	Switch on/off	1	PC
240	6.634-020.0	Display contact pressure reversing rolling mill	1	PC
250	5.007-461.0	Plate fixing strap	1	PC





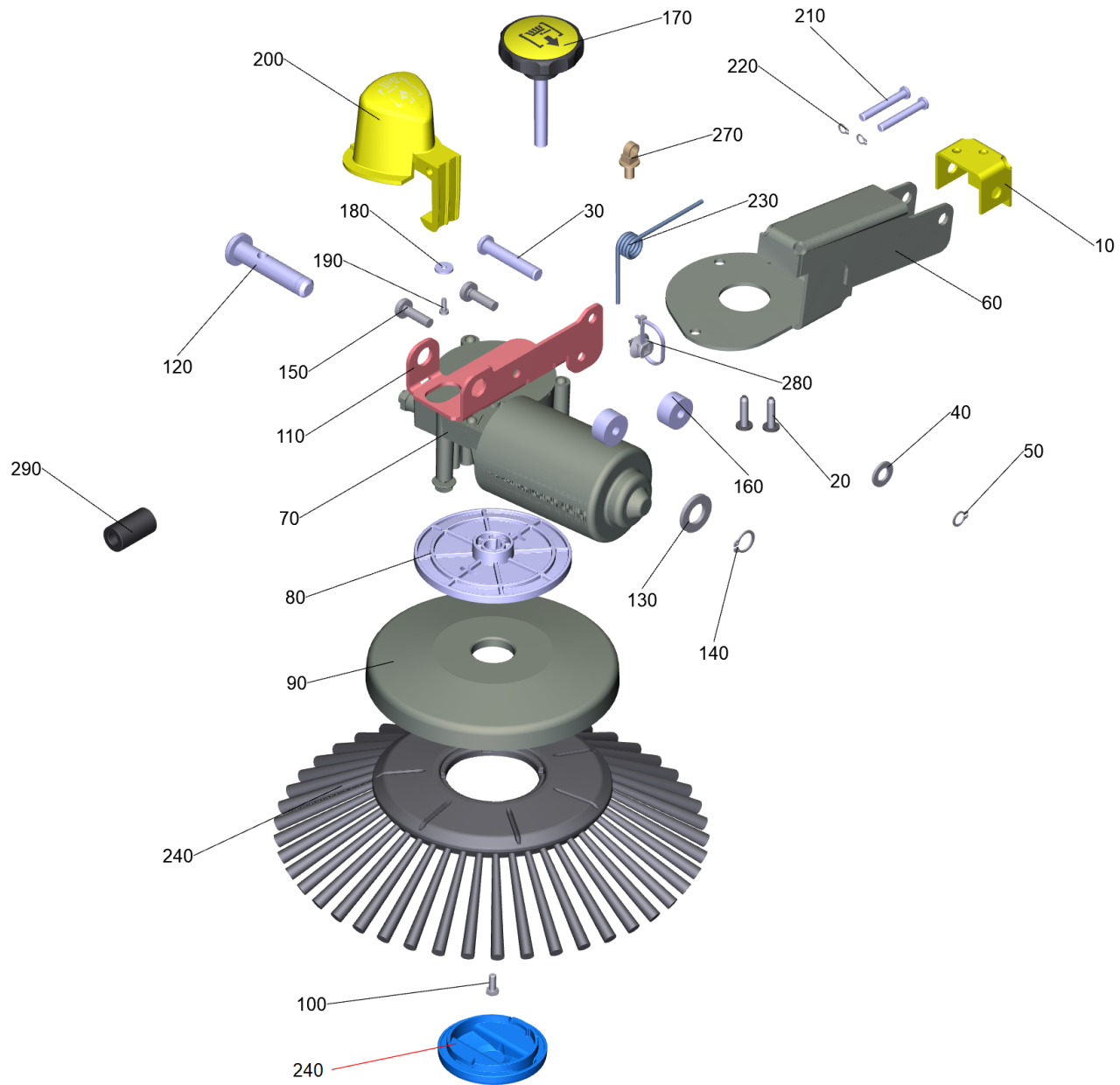


40 Blower CVS 65/1

POS	Article no.	Description	Quantity	Unit	Foot note text
10	6.454-222.0	Gear motor filter cleaning	1	PC	
20	7.306-077.0	Screw M5x16 -8.8-R2R (In6Rd)	7	PC	
30	4.059-575.0	Eccentric pivot point cpl.	1	PC	
40	5.365-076.0	Seal air duct	1	PC	
50	6.422-214.0	Bearing 687 ZZ	1	PC	
60	7.306-067.0	Screw M 5x8-ST- 8.8-ZNBHL (IN6RD)	3	PC	
70	6.650-605.0	Cable tie with clip	3	PC	
80	5.316-028.0	Bolt bearing connecting link	1	PC	
90	7.312-278.0	Washer 5-200HV-A2E ISO7093-1	4	PC	
100	4.040-989.0	Connecting link filter cleaning	1	PC	VERSION 1
100	5.098-567.0	Sheet metal component connecting link threaded	1	PC	VERSION 2
110	6.987-524.0	Bush	1	PC	
120	5.365-085.0	Seal 460 mm	1	PC	
130	5.032-199.0	Covering cap connecting link	1	PC	VERSION 1
130	5.500-256.0	Covering cap connecting link lateral	1	PC	VERSION 2
140	6.905-097.0	Brush strip sealing connecting link	2	PC	VERSION 1
140	6.905-192.0	Brush strip sealing lateral	1	PC	VERSION 2
150	7.305-048.0	Countersunk screw M5x12 -A2-70 (In6Rd)	4	PC	VERSION 1
160	7.311-421.0	Hexagon nut M 5-04-A2E DIN 985	4	PC	
170	7.303-108.0	Screw 5x20 -10.9-R2R (In6Rd)	10	PC	
180	4.058-838.0	Bearing wiper	1	PC	
190	6.403-050.0	Plain bearing with collar Iglidur G D10	1	PC	
200	4.040-990.0	Wiper filter cleaning	1	PC	
210	7.312-276.0	Washer 6 -200HV-A2E ISO7093-1	1	PC	
220	7.306-087.0	Screw M6x10 -8.8-R3R (In6Rd)	1	PC	
230	5.032-123.0	Stripper prefilter	1	PC	
240	5.096-420.0	Plate fixing scraper	1	PC	
250	7.306-071.0	Screw M5x10 -8.8-R2R (In6Rd)	2	PC	
260	6.401-243.0	Angle joint WGRM-06-MS	1	PC	
260	7.462-017.0	Fork head G 6x12-igumid DIN 71752	1	PC	VERSION 1
270	5.098-572.0	Bar filter cleaning	1	PC	
270	5.309-006.0	Threaded rod filter cleaning	1	PC	VERSION 1
290	7.462-017.0	Fork head G 6x12-igumid DIN 71752	1	PC	

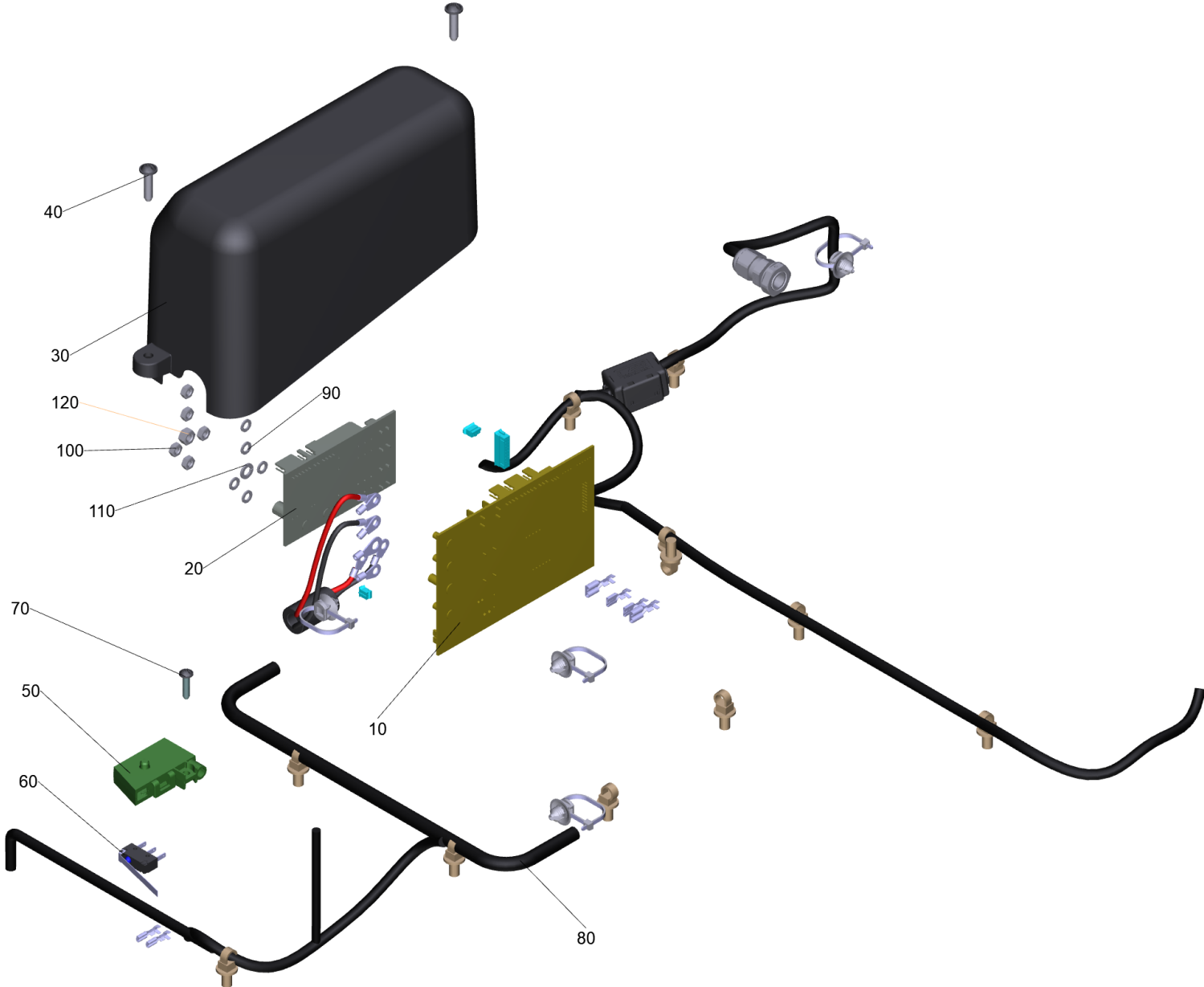
40 Blower CVS 65/1

POS	Article no.	Description	Quantity	Unit	Foot note text
300	5.032-187.0	Air duct	1	PC	
310	6.484-002.0	Blower 008-B100/HD/IE-93D	1	PC	
320	7.306-058.0	Screw M 4X 12- 8.8-R2R K-IN6RD	4	PC	
330	7.311-430.0	Hexagon nut M4-04-A2E DIN 985	4	PC	
340	5.097-965.0	Sheet metal component holder air duct	1	PC	
350	5.110-170.0	Shaft hinge blower	1	PC	
360	7.343-014.0	Locking ring 8x0,8-FST-PHR DIN 471	2	PC	
370	6.907-675.0	Loop	2	PC	
380	5.034-294.0	Handle rope	2	PC	
390	5.097-970.0	Plate holder strap	2	PC	
400	5.032-198.0	Filter cassette	1	PC	
410	5.365-084.0	Seal 905 mm	1	PC	
420	6.907-449.0	Flat pleated filter PE/PTFE M 0,95 m ²	1	PC	
430	5.745-280.0	Prefilter CVS 65/1	1	PC	
450	7.307-057.0	Threaded pin M4x6 -A2-21H ISO 4027	1	PC	
460	7.777-999.0	Stockpiling discontinued	2	PC	
480	6.574-326.0	Ferrite sleeve	1	PC	
490		Sheet metal component air duct left	1	PC	
500	5.112-448.0	Bush	1	PC	
520	5.500-255.0	Cover bar	1	PC	



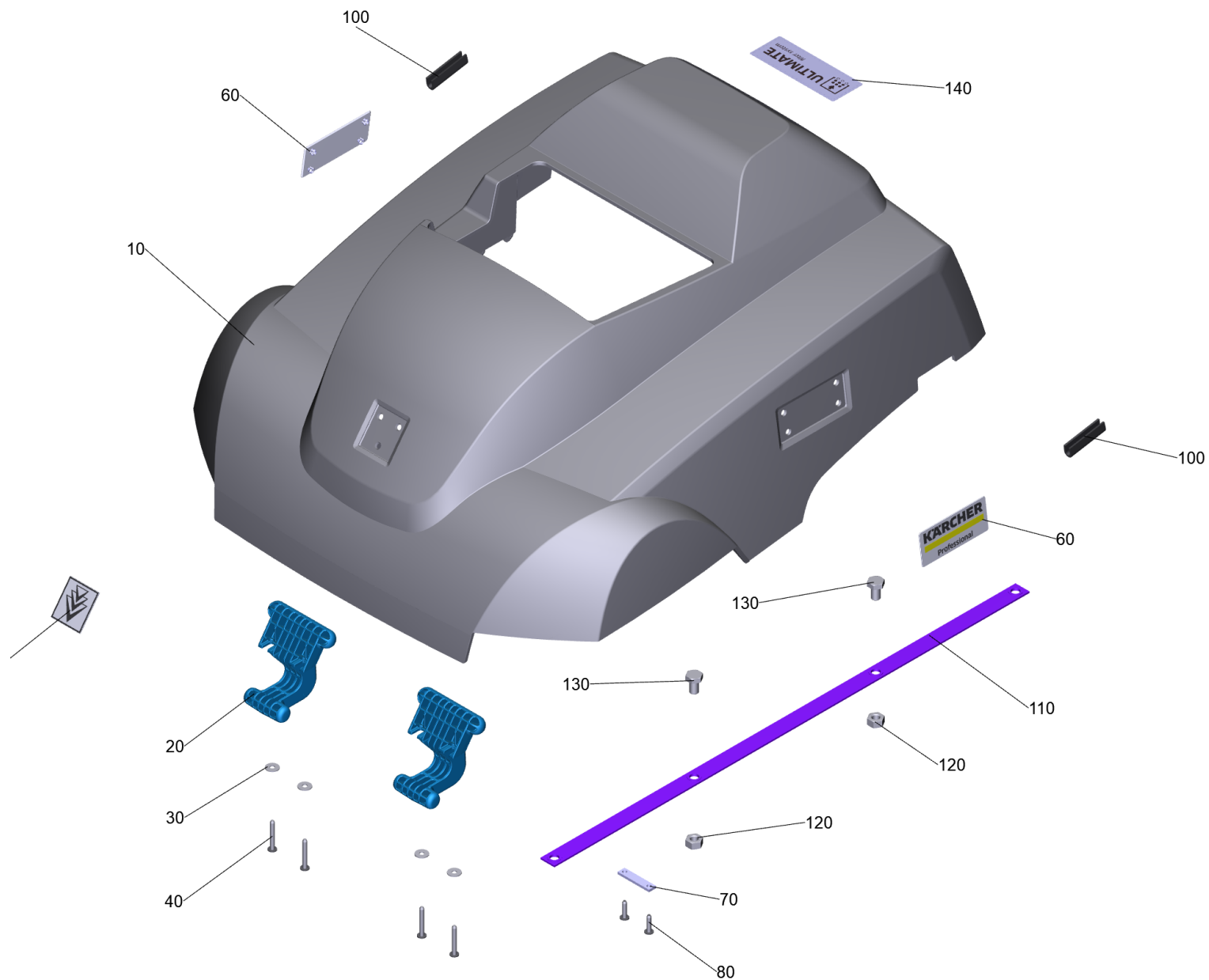
50 Side broom cpl.

POS	Article no.	Description	Quantity	Unit
10	5.097-959.0	Sheet metal component bearing side broom	1	PC
20	7.303-108.0	Screw 5x20 -10.9-R2R (In6Rd)	2	PC
30	5.316-024.0	Bolt 8x42	1	PC
40	7.312-017.0	Washer 8-A2 ISO 7089	1	PC
50	7.343-014.0	Locking ring 8x0,8-FST-PHR DIN 471	1	PC
60	5.097-960.0	Sheet metal component suspension side broom	1	PC
70	6.454-221.0	Gear motor side broom right	1	PC
80	5.625-041.0	Driving plate side broom	1	PC
90	5.064-559.0	Rejecting plate	1	PC
100	7.304-483.0	Hexagonal head screw M 4x10-A2-70 ISO 4	1	PC
110	5.096-398.0	Sheet metal component height adjustment side broom	1	PC
120	5.318-107.0	Bolt 12x56	1	PC
130	7.312-012.0	Washer 12-300HV-ZFSH ISO 7089	1	PC
140	7.343-083.0	Locking ring 12x1 -FSt DIN 471	1	PC
150	7.306-092.0	Screw M6x20-ST- 8.8-R3R (IN6RD)	2	PC
160	7.777-999.0	Stockpiling discontinued	2	PC
170	6.321-343.0	Star grip side broom	1	PC
180	5.115-042.0	Washer 3,2x11x1,5	1	PC
190	7.306-203.0	Screw M3x8 -A2-70 ISO 14853	1	PC
200	5.032-189.0	Push button side broom	1	PC
210	5.316-025.0	Bolt 5x35	2	PC
220	7.343-041.0	Locking ring 5x0,6-FST-PHR DIN 471	2	PC
230	5.332-189.0	Leg spring	1	PC
240	2.884-355.0	Spare parts set side broom	1	PC
270	6.650-605.0	Cable tie with clip	1	PC
280	6.641-464.0	Cable tie	1	PC
290	6.574-326.0	Ferrite sleeve	1	PC



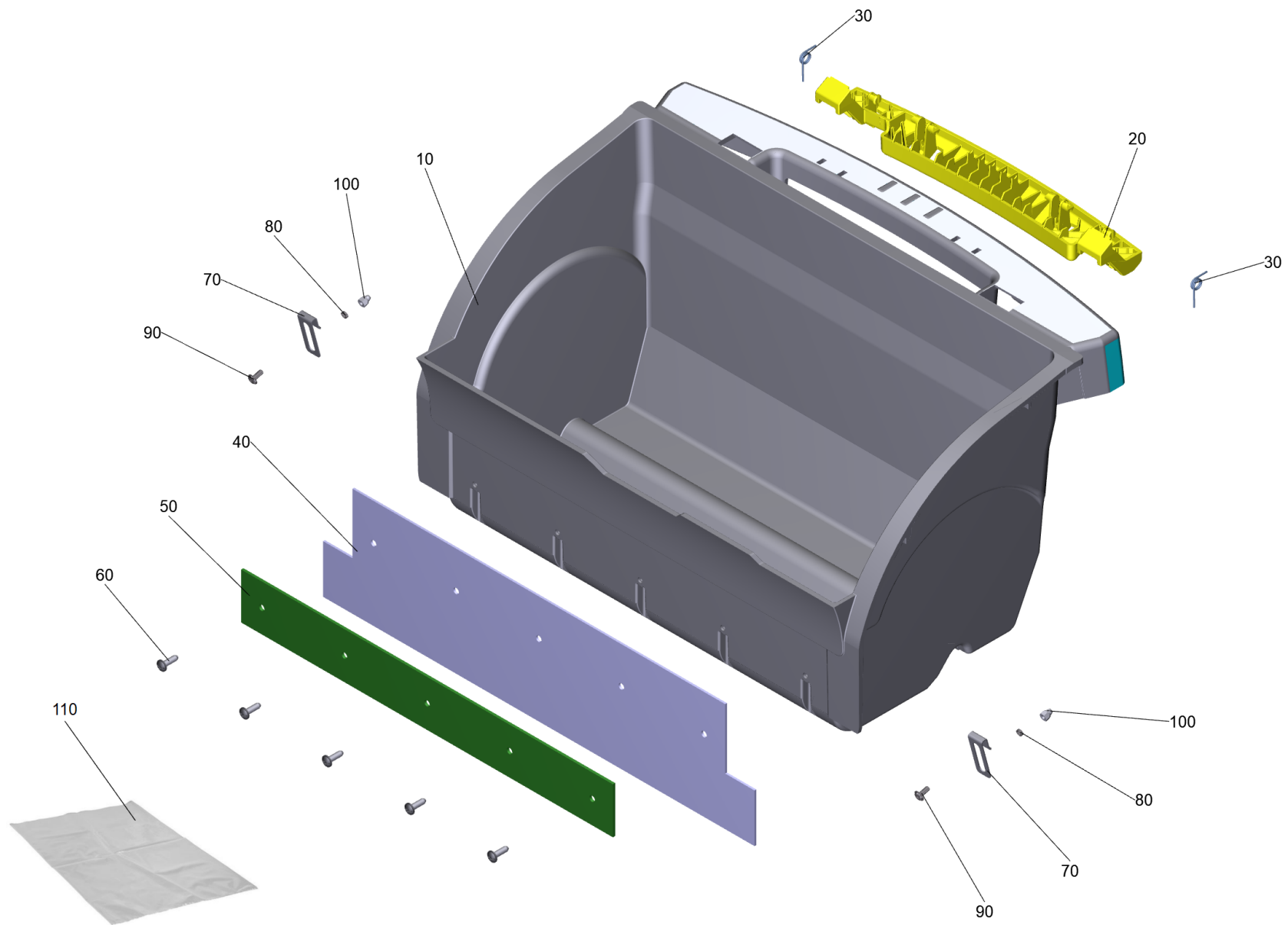
60 Electronics CVS 65/1

POS	Article no.	Description	Quantity	Unit
10	4.683-320.0	Control system electronics KM 65/20	1	PC
20	4.683-321.0	Control system electronics Motor Switchboard	1	PC
30		Cover plate electronics	1	PC
40	7.303-108.0	Screw 5x20 -10.9-R2R (In6Rd)	2	PC
50	5.060-998.0	Housing micro switch	1	PC
60	6.630-331.0	Micro switch	1	PC
70	7.303-205.0	Screw 4x16-St-10.9-R2R (K-In6Rd)	1	PC
80		Cable harness sweeper CVS 65_1 Bat.	1	PC
90	7.313-017.0	Spring washer B 4-1.4310 DIN 127	5	PC
100	7.311-001.0	Hexagon nut M4 -6-A2E ISO 4032	5	PC
110	7.313-016.0	Spring washer B 5-1.4310 DIN 127	1	PC
120	7.311-002.0	Hexagon nut M5 -6-A2E ISO 4032	1	PC



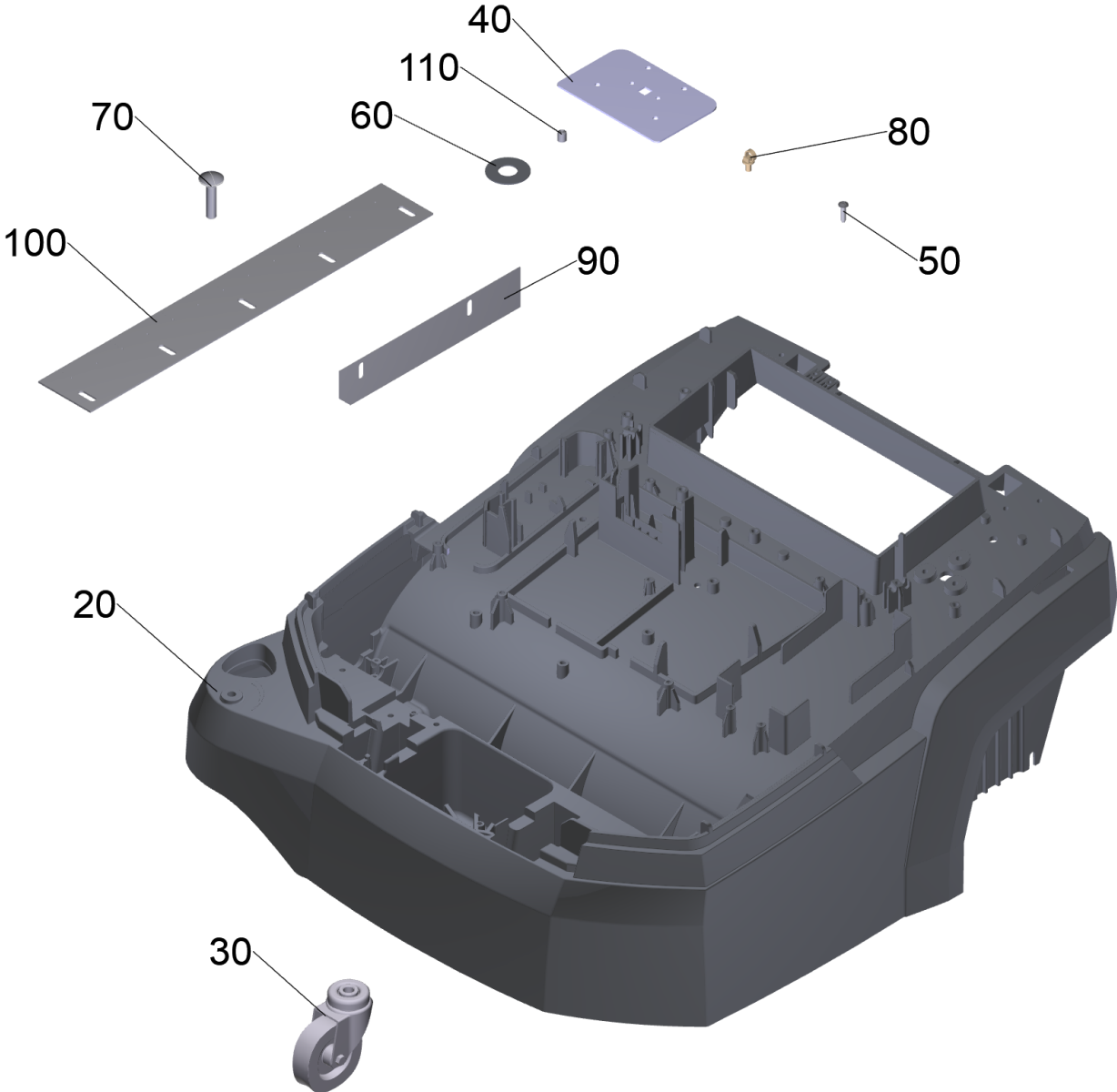
70 Cover cpl.

POS	Article no.	Description	Quantity	Unit
10	5.032-184.0	Cover	1	PC
20	5.035-610.0	Swivel arm tank	2	PC
30	7.312-282.0	Washer 5-A2 ISO 7093-1	4	PC
40	7.303-110.0	Screw 5x35 -10.9-R2R (In6Rd)	4	PC
50	5.385-507.0	Label signet clipped L Professional	1	PC
60	5.385-502.0	Label logo clipped L Professional	2	PC
70	5.007-461.0	Plate fixing strap	1	PC
80	7.303-108.0	Screw 5x20 -10.9-R2R (In6Rd)	2	PC
100	5.365-083.0	Seal 50 mm	2	PC
110	5.020-011.0	Strap bracket cover	1	PC
120	7.311-006.0	Hexagon nut M10 -8-A3E ISO 4032	2	PC
130	7.304-410.0	Hexagonal head screw M10x16-8.8-A3E ISO	2	PC
140	5.361-013.0	Label ULTIMATE	1	PC



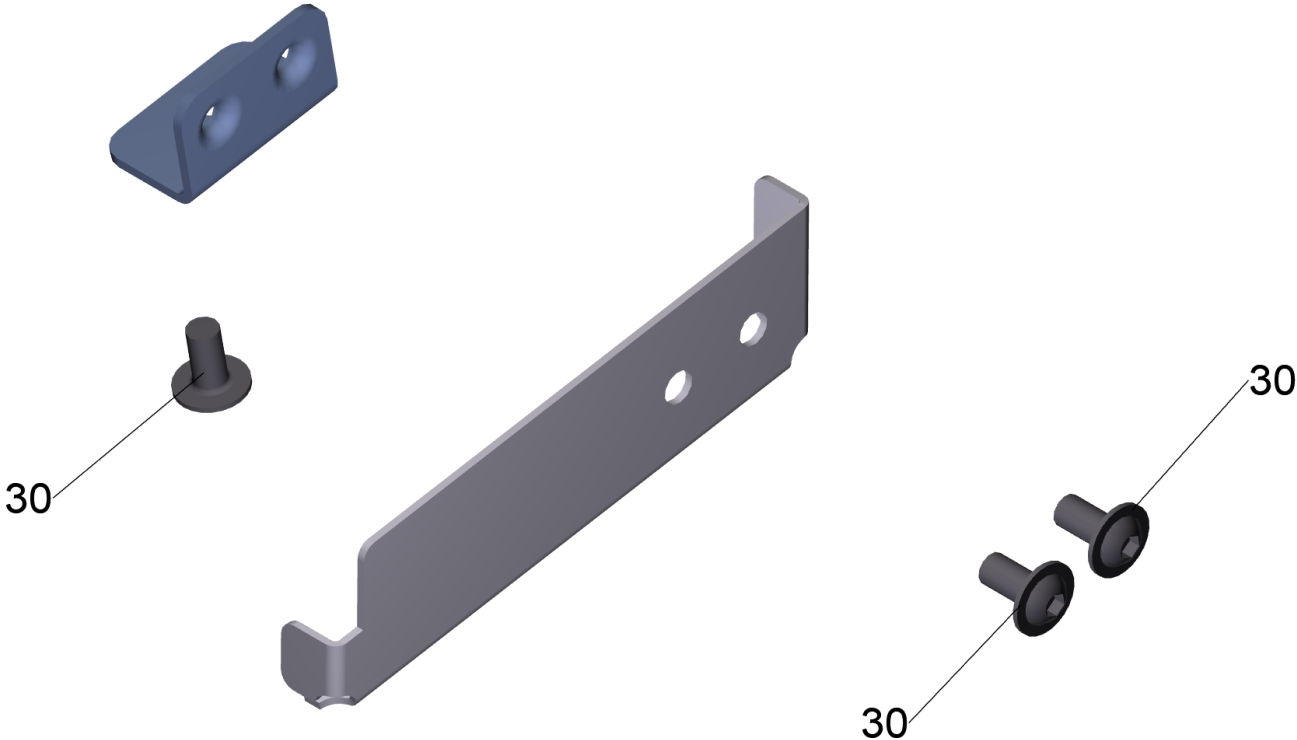
80 Sweep tank cpl.

POS	Article no.	Description	Quantity	Unit
10	5.032-186.0	Sweep tank	1	PC
20	5.032-183.0	Lever sweep tank	1	PC
30	5.332-185.0	Leg spring	2	PC
40	5.032-181.0	Skirting sweep tank	1	PC
50	5.097-967.0	Plate holder skirting	1	PC
60	7.303-107.0	Screw 5x16 -10.9-P2R (K-In6Rd)	5	PC
70	5.097-804.0	Clamp waste bag	2	PC
80	5.110-687.0	Sleeve	2	PC
90	6.100-189.0	Oval head screw with collar M4x10	2	PC
100	7.311-624.0	Cap nut M 4-A2 DIN 986	2	PC
110	2.884-358.0	Spare parts set bag	1	PC



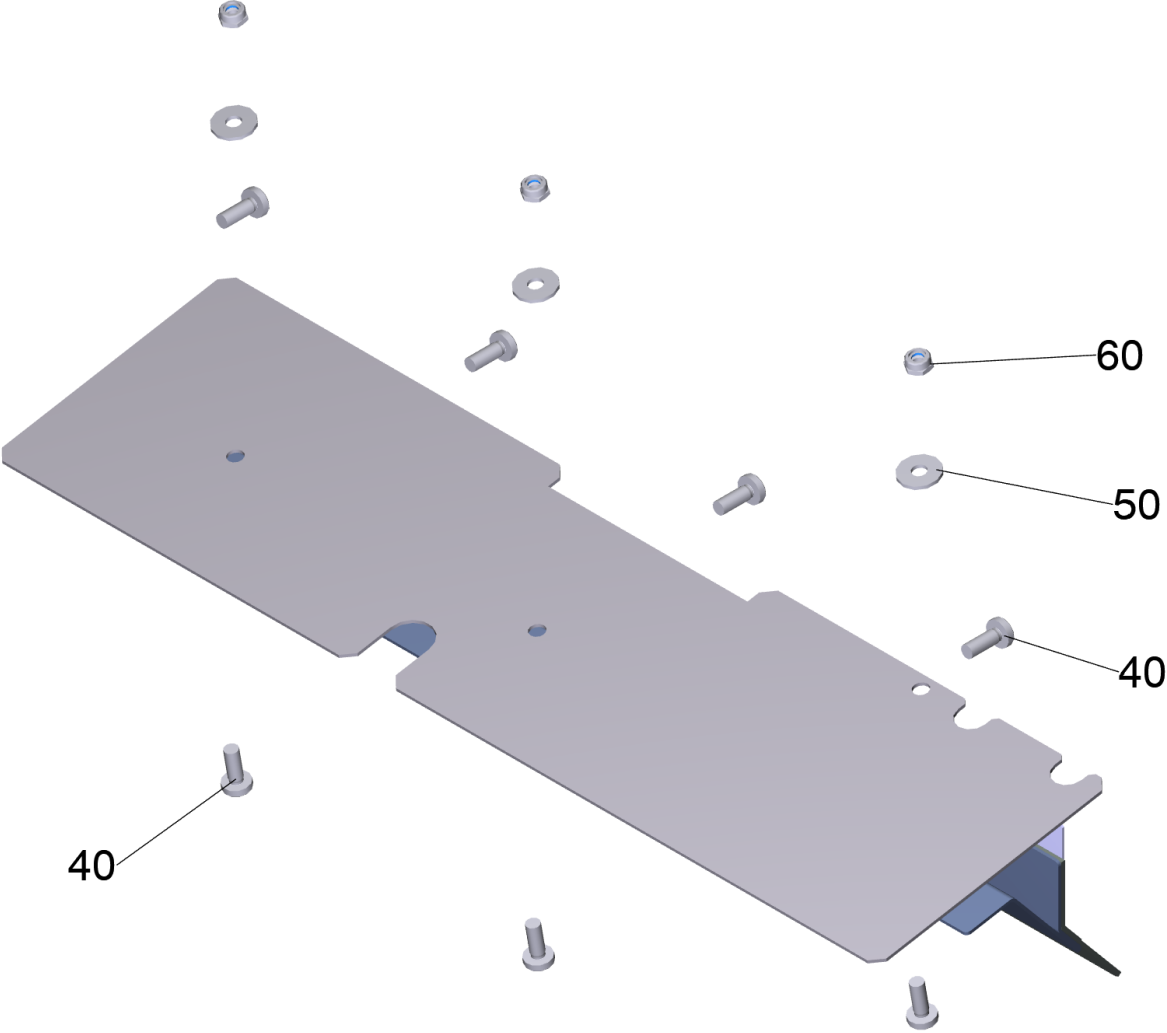
110 Conversion kit frame CVS 65/1 (2.882-078.0)

POS	Article no.	Description	Quantity	Unit
20	5.032-191.0	Frame	1	PC
30	6.966-068.0	Castor	1	PC
40	5.098-401.0	Plate reinforcement front	1	PC
50	7.303-108.0	Screw 5x20 -10.9-R2R (In6Rd)	4	PC
60	5.115-047.0	Washer castor	1	PC
70	7.303-173.0	Saucer-head screw M10x45 -St-A0P DIN 603	1	PC
80	6.650-605.0	Cable tie with clip	15	PC
90	5.032-182.0	Skirting side	2	PC
100	5.032-117.0	Skirting front	1	PC
110	7.777-999.0	Stockpiling discontinued	1	PC



120 Conversion kit retainer accumulator CVS 65/1 (2.882-082.0)

POS	Article no.	Description	Quantity	Unit
30	6.304-153.0	Oval head screw M6x12-A2 aeahl: ISO 738	3	PC



130 Conversion kit leading contour (2.882-092.0)

POS	Article no.	Description	Quantity	Unit
40	7.306-090.0	Screw M6x16 -8.8-P2R (In6Rd)	7	PC
50	7.312-276.0	Washer 6 -200HV-A2E ISO7093-1	3	PC
60	7.311-425.0	Hexagon nut M6-04-A2E DIN 985	3	PC