

## Table of contents

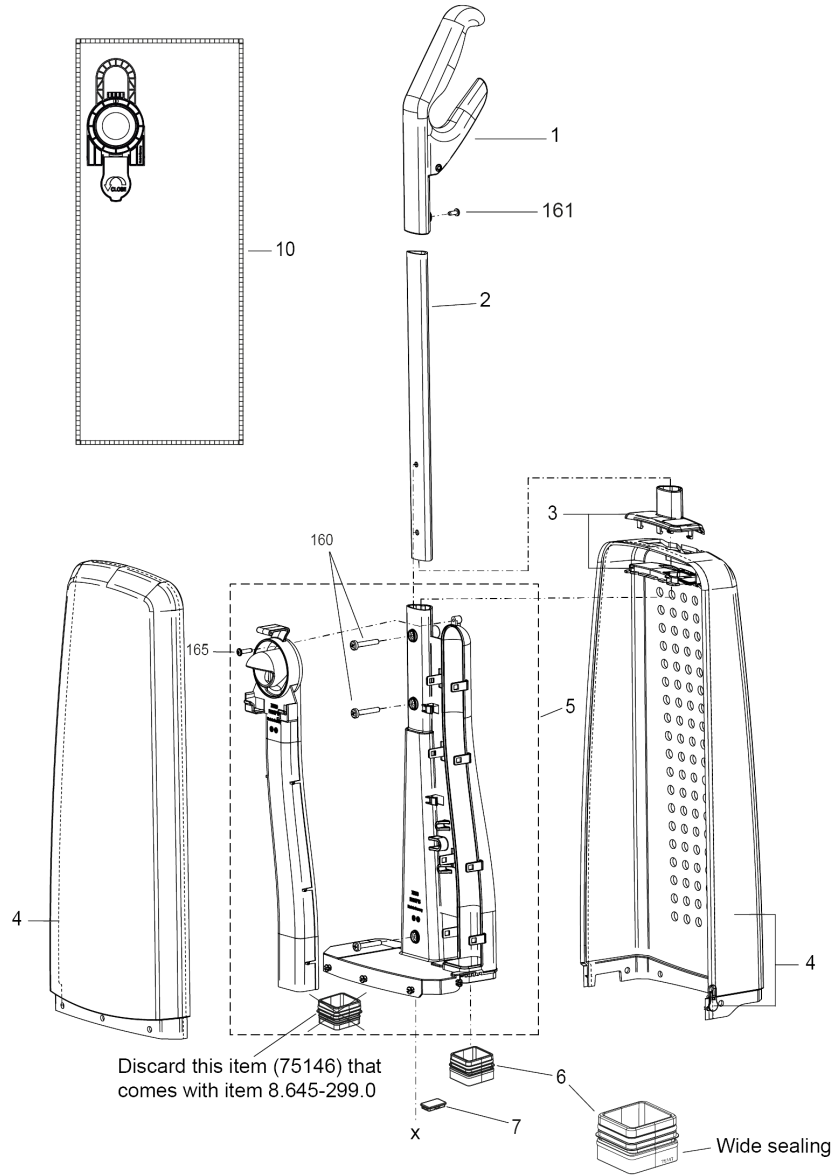
---

Sensor Bp Pack *UL (9.877-937.0)	2
10 Filter Bag Housing - Sensor Bp	3
20 Power Head - Sensor Bp	5

Sensor Bp Pack \*UL (9.877-937.0)

---

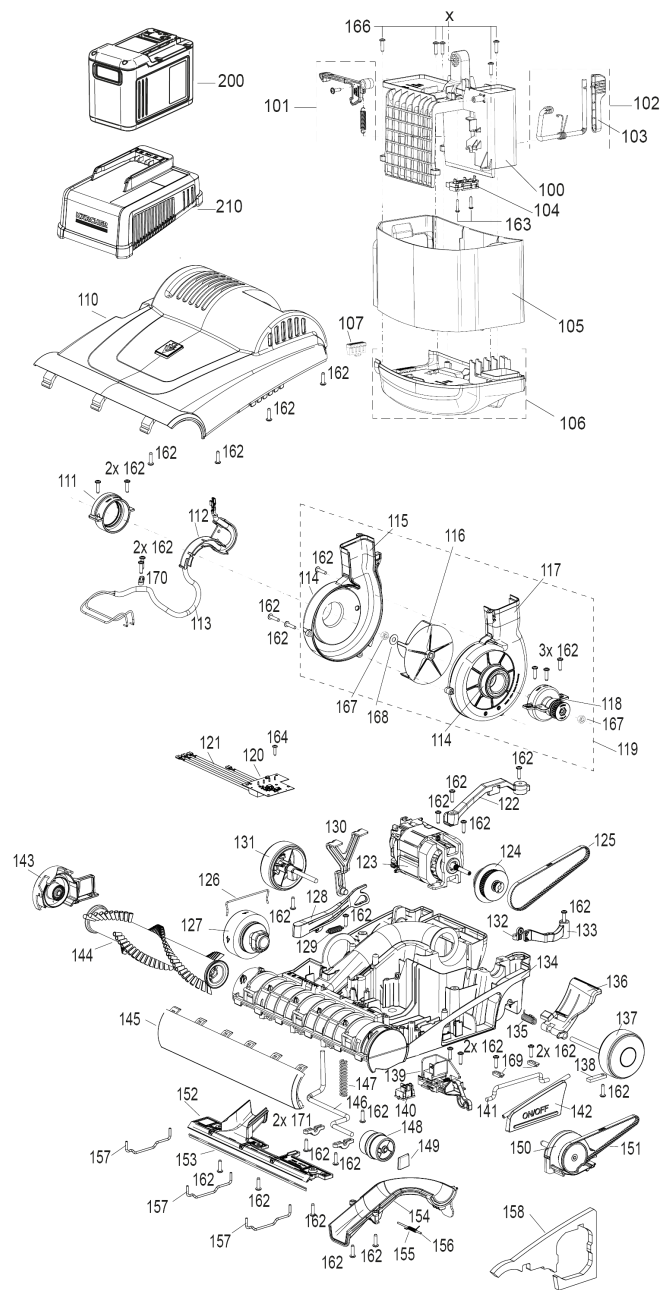
<b>POS</b>	<b>Description</b>	<b>Quantity</b>	<b>Unit</b>
10	Filter Bag Housing - Sensor Bp	1	PC
20	Power Head - Sensor Bp	1	PC



## 10 Filter Bag Housing - Sensor Bp

---

POS	Article no.	Description	Quantity	Unit
2		Handle rod Sensor Bp 434mm	1	PC
3		Handle guide battery 2 pieces	1	PC
4		Filter compartment mounted	1	PC
5	8.645-299.0	Air guide mounted station	1	PC
6	8.645-300.0	Seal 2x3x164mm	1	PC
7		Cover air guide	1	PC
10	8.645-209.0	Vacuum bag sensor BP/Ranger 10 pack	1	PC
160	8.614-707.0	SCREW, M5 X 30 DIN7985A NP	1	PC
161	8.614-483.0	SCREW, M4 X 10	1	PC
165	8.614-478.0	SCREW, M4 X16-T20 SS	1	PC



## 20 Power Head - Sensor Bp

POS	Article no.	Description	Quantity	Unit
100		Battery bridge 36V grey black cp	1	PC
101		Battery lock cpl	1	PC
102		Battery release cpl 36V	1	PC
103		Battery release lever zinc yellow	1	PC
104		Contact socket 2pos	1	PC
105		Battery cover 36V basalt gray	1	PC
106		Battery support basalt gray mounted	1	PC
107		Battery stop	1	PC
110		Cover top Karcher Sensor Bp basalt gray	1	PC
111	8.645-311.0	Swivel neck support right hand	1	PC
112	8.645-312.0	Cable channel	1	PC
113		Swivel neck cable Karcher battery	1	PC
114	8.645-314.0	Swivel neck support bushing	1	PC
115		Blower housing rh light gray	1	PC
116	8.645-316.0	Rotor white	1	PC
117		Blower housing lh light gray	1	PC
118	8.645-318.0	Swivel neck support left hand complete	1	PC
119	8.645-319.0	Blower swivel neck gray black assembled	1	PC
120		Main Board PCB Sensor Bp 36V	1	PC
121		Cable set battery	1	PC
122	8.645-322.0	Motor bridge light gray	1	PC
123		Motor 36V	1	PC
124	8.645-324.0	Sensor torque	1	PC
125	8.613-822.0	BELT, 333 3M HTDII-6	1	PC
126	8.645-325.0	Bracket latching	1	PC
127	8.645-326.0	Selector switch brush height yellow	1	PC
128	8.645-327.0	Slider height adjustment	1	PC
129	8.614-527.0	SPRING	1	PC
130	8.645-328.0	Support lever	1	PC
131	8.645-329.0	Wheel and axle assembly right hand black	1	PC
132	8.645-330.0	Magnet support assembled	1	PC
133	8.645-331.0	Magnet lever assembled	1	PC
134		Bottom Unit basalt gray	1	PC

## 20 Power Head - Sensor Bp

POS	Article no.	Description	Quantity	Unit
135	8.645-333.0	Spring foot pedal	1	PC
136	8.645-334.0	Foot pedal yellow	1	PC
137	8.645-335.0	Wheel with axle foot pedal lh black	1	PC
138	8.613-792.0	AXLE CLAMP	1	PC
139	8.645-336.0	Switching device unit assembled	1	PC
140	8.639-739.0	Switch	1	PC
141	8.645-337.0	Rod switching	1	PC
142	8.645-338.0	Button on/off zinc yellow	1	PC
143		Bearing block rh basalt gray	1	PC
144	8.600-495.0	BRUSH ROLLER 12"	1	PC
145	8.645-340.0	Bumper Ranger black	1	PC
146	8.645-341.0	Adjustment axle pile	1	PC
147	8.645-342.0	Spring pile adjustment	1	PC
148		Adjustment wheel pile mount light gray	1	PC