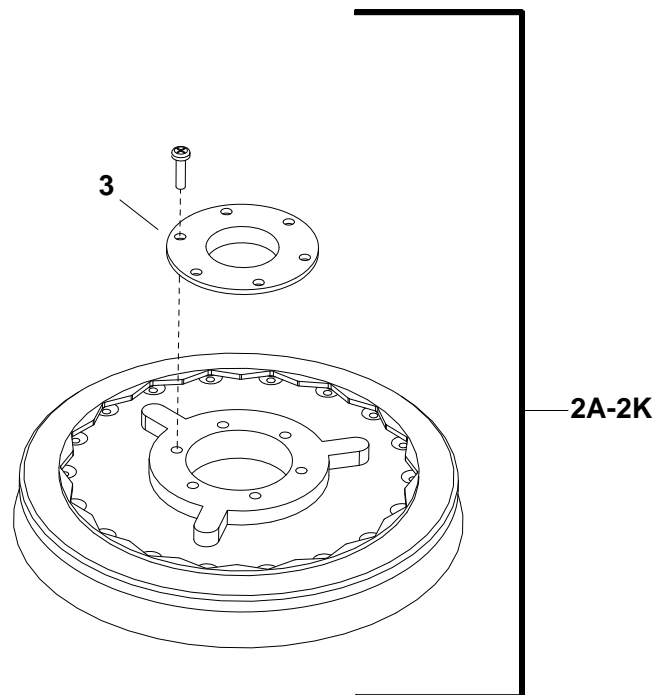
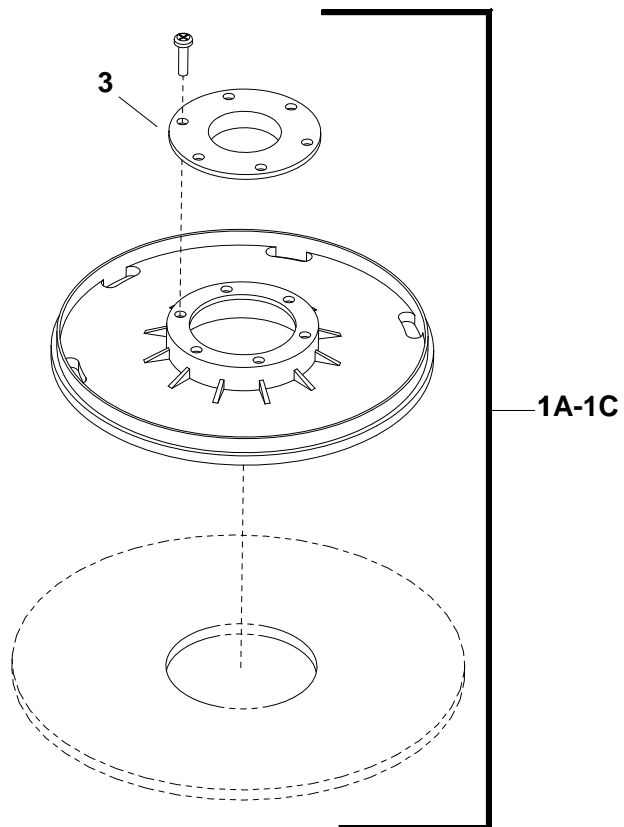


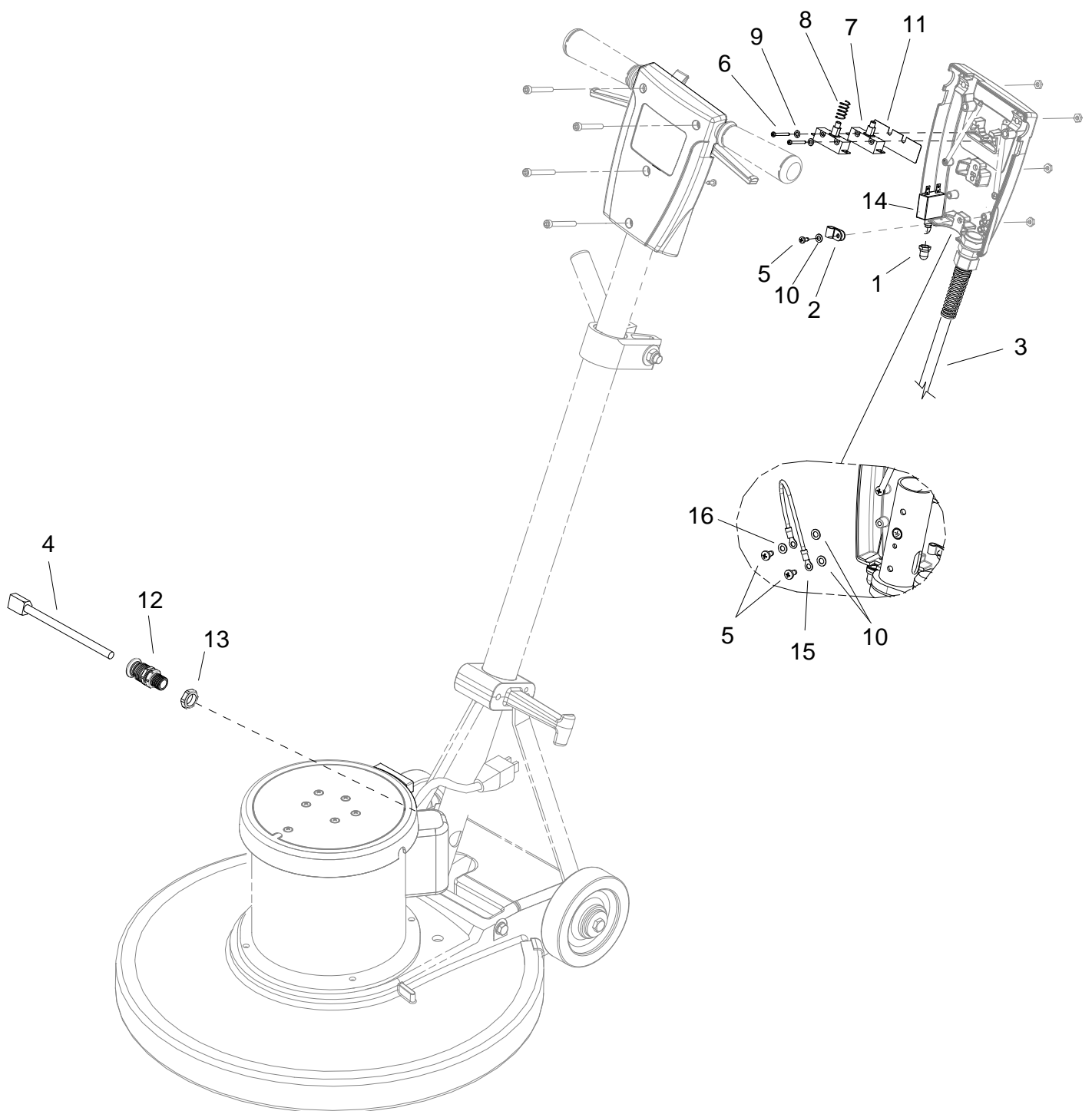
BRUSH/PAD DRIVER



BRUSH/PAD DRIVER

REF	PART NO.	QTY	DESCRIPTION	SERIAL NO. FROM	NOTES:
1A	86000120	-	PAD DRIVER, 17" POLISHER		
1B	86284290	-	PAD DRIVER, 19" HS		
1C	86284300	-	PAD DRIVER, 20" POLISHER		
2A	86000140	-	BRUSH, 17" NYL. POL. W/CLT.PLT		
2B	86283800	-	BRUSH, 17" NYL.SCRUB W/CLT.PLT		
2C	86000130	-	BRUSH, 17" MILD GRIT W/CLT.PLT		
2D	86283710	-	BRUSH, 17" AGG. MALGRIT W/C.P		
2E	86000110	-	BRUSH, 17" POLYPRO W/CLT. PLT		
2F	86283790	-	BRUSH, 20" NYL.POL.W/CLT.PLT.SFT		
2G	86283770	-	BRUSH, 20" NYL.SCRUB W/CLT.PLT		
2H	86283780	-	BRUSH, 20" MILD GRIT W/CLT.PLT		
2J	86283690	-	BRUSH, 20" AGG. MALGRIT W/C.P.		
2K	86283700	-	BRUSH, 18" POLYPRO W/CLT. PLT		
3	86284350	-	PLATE, PAD CLUTCH		

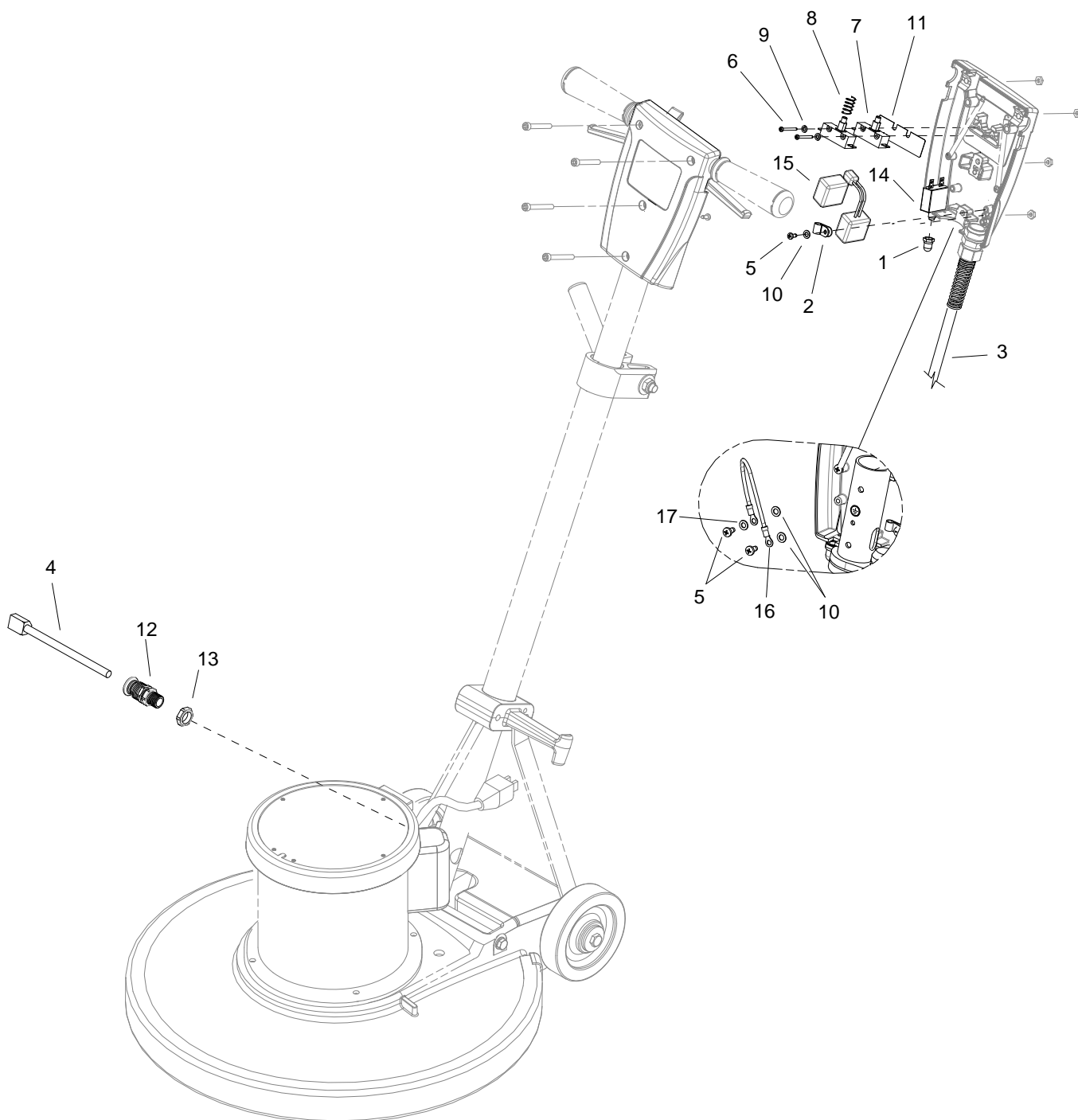
ELECTRICAL-120V



ELECTRICAL-120V

REF	PART NO.	QTY	DESCRIPTION	SERIAL NO. FROM	NOTES
1	86002010	1	BOOT, 3/8 CIRCUIT BREAKER		
2	86198450	1	CLAMP, 5/16 NYLON		
3	86369090	1	CORD SET, ST, 14/50', YLW		
4	86216920	1	CORDSET, 14/3 X 52 IN, SJT, BLK		
5	86288450	3	SCR, M4.8 X 10 HHTF TYPE B		
6	86136780	2	SCR, M3.5 X 40 PHTF		
7	86007110	2	SWITCH, 25A SPST 125-250V SNAP		
8	86224750	1	SPRING, COMP, .48OD X .91		
9	86137290	2	WASHER, M4 LOCK		
10	86137330	3	WASHER, M5 LOCK		
11	86215140	1	BARRIER SHEET		
12	86224930	1	STRAIN RELIEF, 14/3 STRAIGHT		
13	86224300	1	SPACER, POLISHER HANDLE		
14	86312460	1	BREAKER, 14A, VDE CIRCUIT		
15	86352480	1	WIRE, 14AWG, #10R X #10R, YLW W/GRN		
16	86173250	1	WASHER, M5, FLAT, ISO7089, SS		

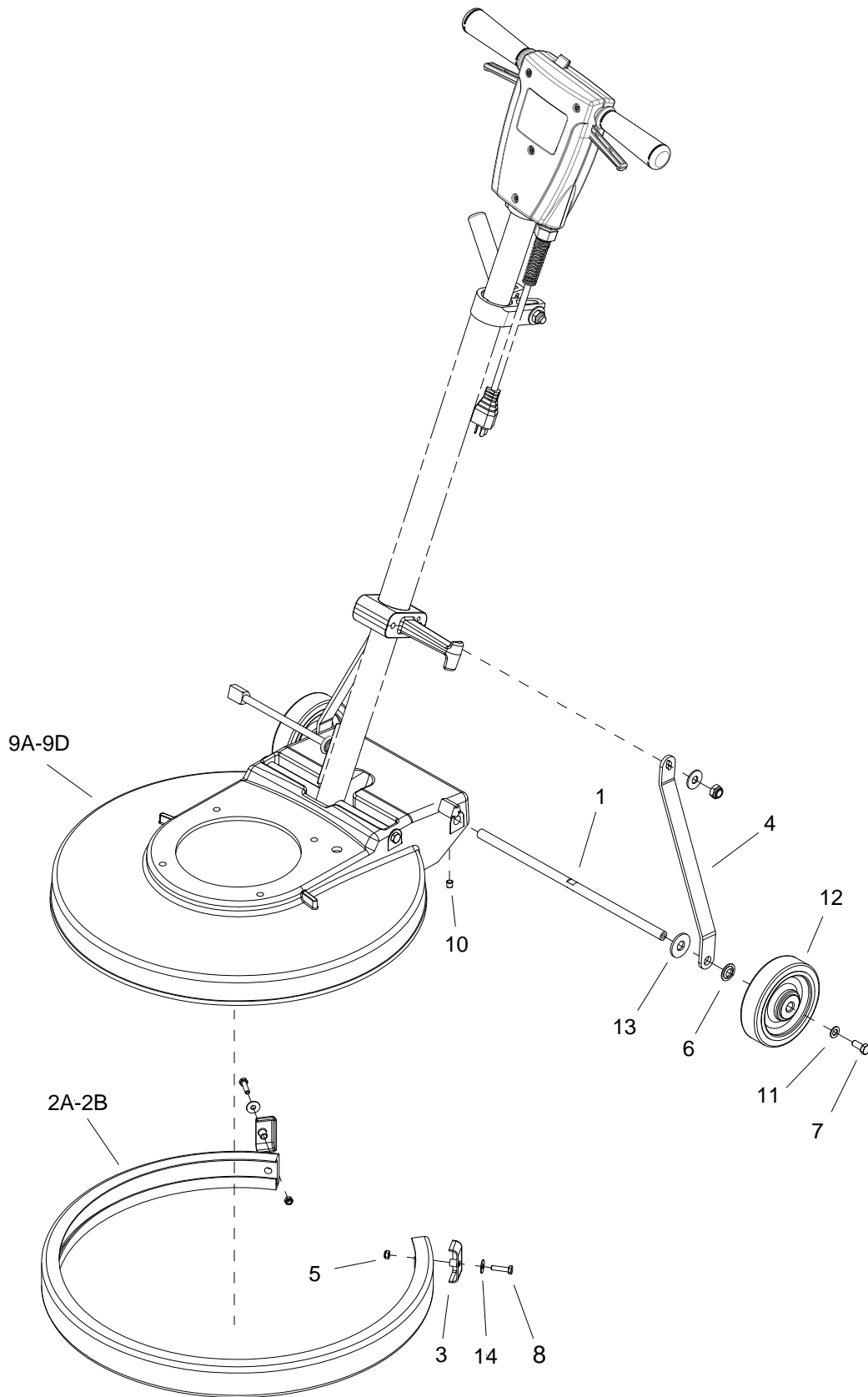
ELECTRICAL-230V



ELECTRICAL-230V

REF	PART NO.	QTY	DESCRIPTION	SERIAL NO. FROM	NOTES
1	86002010	1	BOOT, 3/8 CIRCUIT BREAKER		
2	86198450	1	CLAMP, 5/16 NYLON		
3	86369110		CORD SET, EURO,75', BLK		
4	86216920	1	CORDSET, 14/3 X 52 IN, SJT, BLK		
5	86288450	3	SCR, M4.8 X 10 HHTF TYPE B		
6	86136780	2	SCR, M3.5 X 40 PHTF		
7	86007110	2	SWITCH, 25A SPST 125-250V SNAP		
8	86224750	1	SPRING, COMP, .48OD X .91		
9	86137290	2	WASHER, M4 LOCK		
10	86137330	3	WASHER, M5 LOCK		
11	86215140	1	BARRIER SHEET		
12	86224930	1	STRAIN RELIEF, 14/3 STRAIGHT		
13	86224300	1	SPACER, POLISHER HANDLE		
14	86312530	1	BREAKER, CIRCUIT 10A, VDE		
15	86217770	1	EMC FILTER ASSY, MB2000I		
16	86352480	1	WIRE, 14AWG, #10R X #10R, YLW W/GRN		
17	86173350	1	WASHER, M5, FLAT, ISO7089, SS		
18	86368870	1	BRKT, STRAIN RELIEF MT		
19	86365760	1	STRAIN RELIEF, METAL, SMALL		

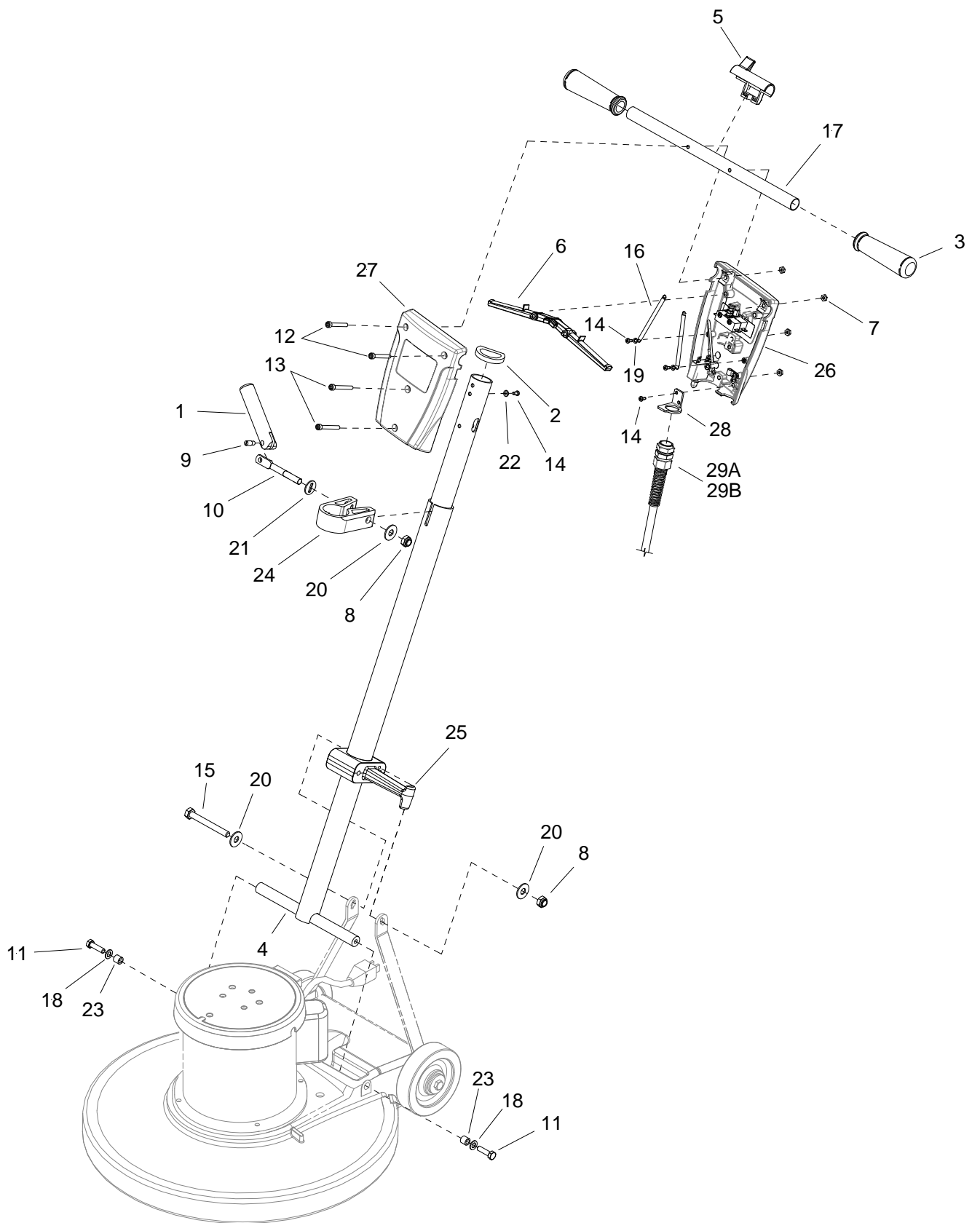
DECK



DECK

REF	PART NO.	QTY	DESCRIPTION	SERIAL NO. FROM	NOTES
1	86214930	1	AXLE, MAIN POLISHER		
2A	86216340	-	BUMPER, EXTRUSION 41.0"		BP17X, BPD17X, U17X
2B	86216350	-	BUMPER, EXTRUSION 50.8"		BP20X, UDS20X, BPD20X, U20X, SPT20X
3	86216600	2	CAP, EXTRUSION		
4	86221860	2	LINK, HANDLE ADJUST		
5	86271550	2	NUT, M6 X 1 NYLOCK		
6	86222270	2	NUT, PUSH FLAT RD .51 ID		
7	86133340	2	SCR, M8-1.25 X 20 HHMS PLTD		
8	86372780	2	SCREW, M6-1 X 22, HHCS, BLK		
9A	86217600	1	DECK, 17 IN POLISHER, BLUE		BP17X, BPD17X
9B	86288960	1	DECK, 17 IN POLISHER, GRAY		U17X
9C	86217620	1	DECK, 20 IN POLISHER BLUE		SPT20X, BP20X, BPD20X
9D	86288970	1	DECK, 20 IN POLISHER, GRAY		U20X, UDS20X
10	86288740	1	SET SCR, 8MMX1.25X8MM CUP PT		
11	86137280	2	WASHER, M8 FLAT DIN125A PLT		
12	86226020	2	WHEEL, 5D X 1.25 X 13MMID GRY		
13	86225720	2	WASHER, 14MMID X 36MMOD		
14	86137340	2	WASHER, M6 FLAT BLK		

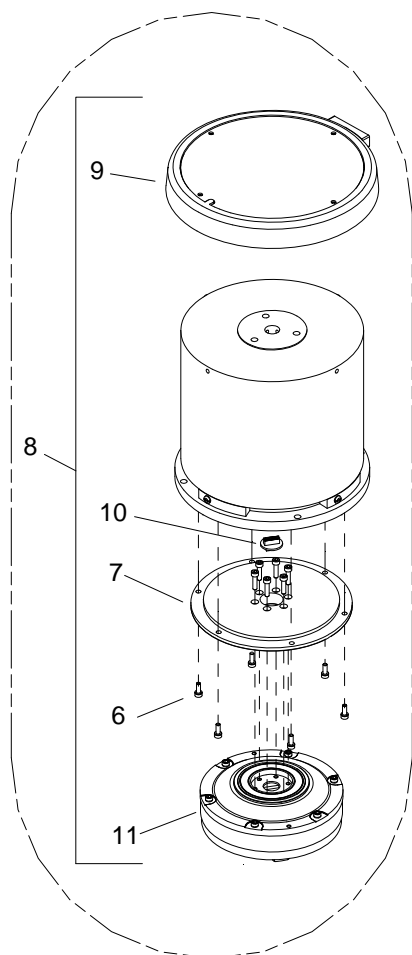
HANDLE



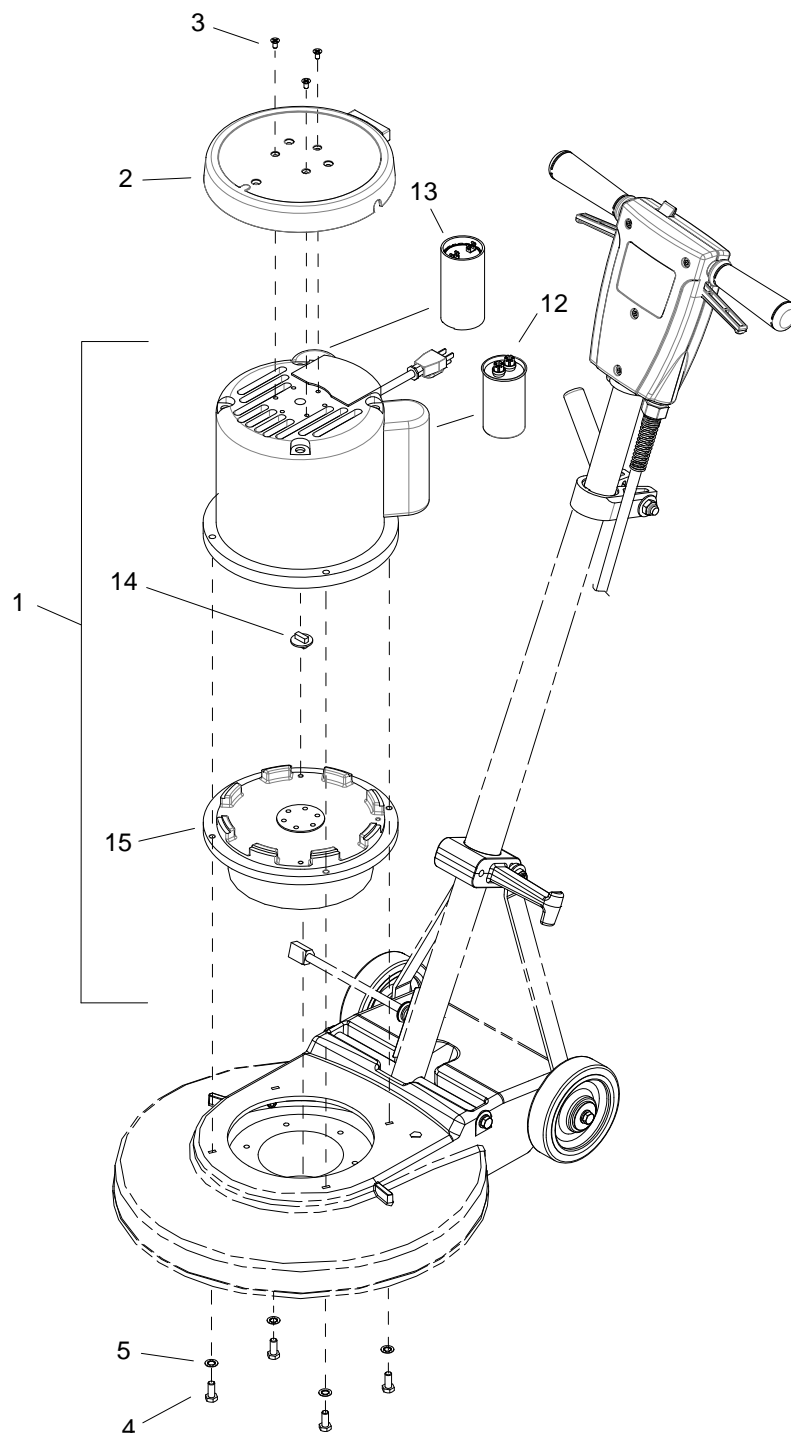
HANDLE

REF	PART NO.	QTY	DESCRIPTION	SERIAL NO. FROM	NOTES
1	86215130	1	BAR, HANDLE ADJUST		
2	86366010	1	BUMPER, FLOOR MACHINE		
3	86004070	2	GRIP, POLISHER HANDLE		
4	86218440	1	HANDLE, POLISHER		
5	86005150	1	LOCK, SAFETY HANDLE		
6	86005160	2	LEVER, SWITCH		
7	86136350	4	NUT, M6 HEX FINISH		
8	86136360	2	NUT, M10 X 1.5 HEX NYLOK PLTD		
9	86222560	1	PIN, PIVOT, HANDLE ADJUST		
10	86223550	1	ROD, HANDLE ADJUST		
11	86274230	2	SCR, M8 X 30 HHMS		
12	86136670	3	SCR, M6 X 45 SHCS, BLK		
13	86136680	2	SCR, M6 X 50 SHCS, BLK		
14	86288450	4	SCR, M4.8 X 10 HHTF TYPE B		
15	86136720	1	SCR, M10 X 1.50 X 90 HHCS PLTD		
16	86224740	2	SPRING, EXT, .50D X 3.5L		
17	86225370	1	TUBE, GRIP HANDLE		
18	86137280	2	WASHER, M8 FLAT DIN15A PLT		
19	86279080	2	WASHER, M4 FLAT DIN125A PLT		
20	86010720	3	WASHER, M10 X 30 PLTD		
21	86225710	1	WASHER, BEARING (HANDLE ADJ)		
22	86137330	1	WASHER, M5 LOCK SHAKEPROOF PLTD		
23	86224290	2	SPACER, .317ID X .50D X .44LG		
24	86310950	1	CLAMP, HANDLE		
25	86311800	1	TUBE ASSY, HANDLE ADJ.		
26	86365950	1	HOUSING, FM HANDLE, REAR		
27	86365960	1	HOUSING, FM HANDLE, FRONT		
28	86368870	1	BRKT, STRAIN RELIEF MT		
29A	86365780	1	STRAIN RELIEF, METAL, LARGE		120V ONLY
29B	86365760	1	STRAIN RELIEF, METAL, SMALL		230V ONLY

MOTOR



DUAL SPEED ONLY



MOTOR

REF	PART NO.	QTY	DESCRIPTION	SERIAL NO. FROM	NOTES
1	86378300	1	MOTOR, ASM. 1.5HP 120V		BP17X, BP20X, U17X, SPT20X, U20X
2	86217490	1	COVER, MOTOR		BP17X, BP20X, U17X, SPT20X, U20X
3	86340550	3	SCREW, 10-32 X .75, FLHMS, ZNPLT		BP17X, BP20X, U17X, SPT20X, U20X
4	86136710	4	SCREW, 5/16-18 X 3/4 HHCS GR5 BLK		
5	86279090	4	WASHER, 5/16 LOCK INT STAR PLT		
6	86223700	6	SCREW, M5 X .8 X 15MM SHCS BLK		BPD20X, UDS20X, BPD17X
7	86223030	1	PLATE, ADAPTER POLISHER MOTOR		BPD20X, UDS20X, BPD17X
8A	86312290	1	MOTOR, 115V, 1.75HP 175/300RPM		BPD20X
8B	86312320	1	MOTOR, 230V, 1.75HP 175/300RPM		BPD17X
9	86217500	1	COVER ASM, MOTOR		BPD17X, UDS20X, BPD20X
10	86135540	1	COUPLING, MTR/GEAR BOX PLSHER		BPD20X, UDS20X, BPD17X
11	86348280	1	GEARBOX, POLISHER		BPD20X, UDS20X, BPD17X
12	86377940	1	CAPACITOR, RUN, μ F, 250VAC, 50/60 Hz		BP17X, BP20X, U17X, SPT20X, U20X
13	86377950	1	CAPACITOR, START, 450 μ F, 165VAC		BP17X, BP20X, U17X, SPT20X, U20X
14	86377960	1	COUPLING, SHEAR		BP17X, BP20X, U17X, SPT20X, U20X
15	86377970	1	GEARBOX, POLISHER		BP17X, BP20X, U17X, SPT20X, U20X