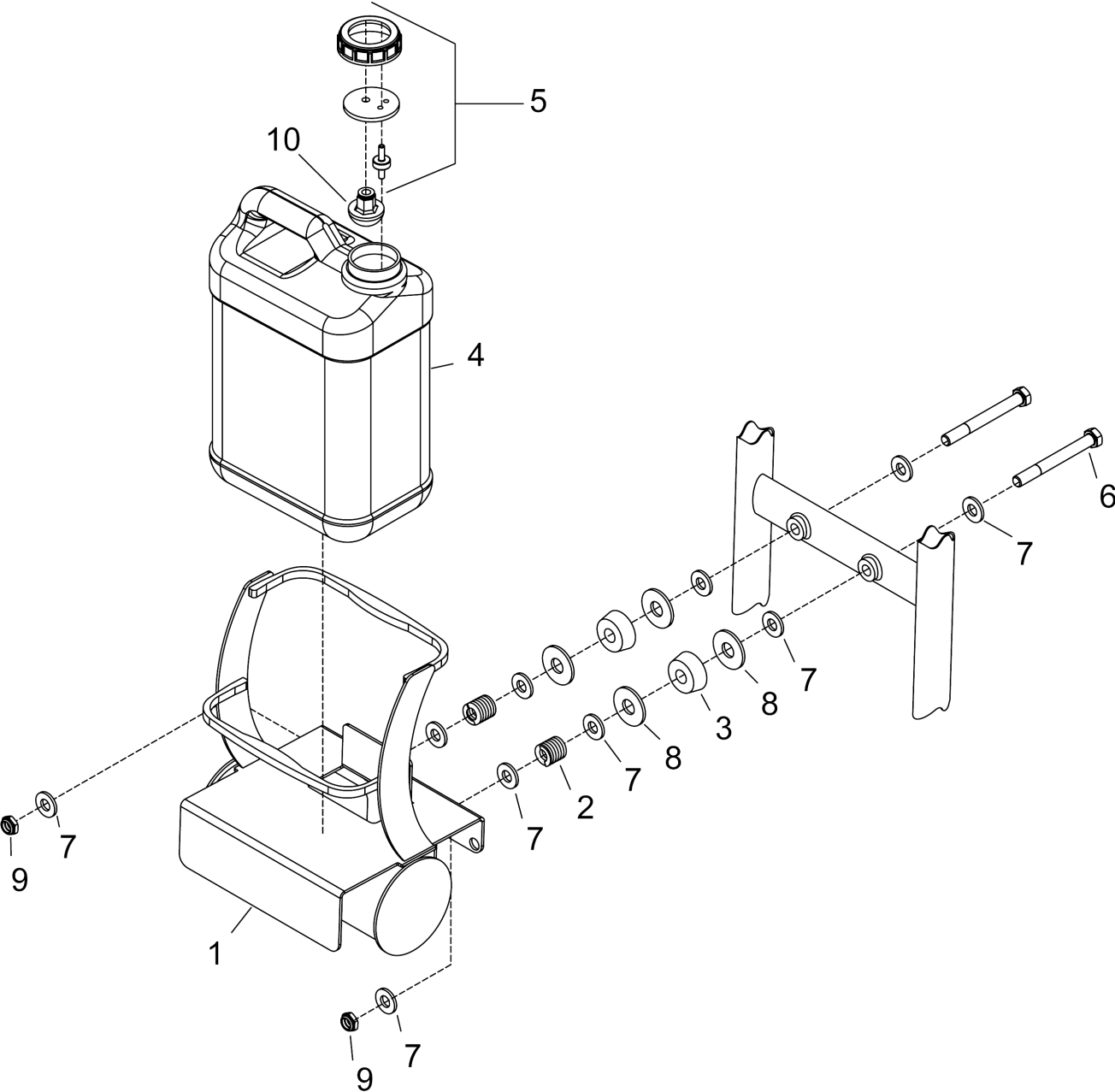


Table of contents

| | |
|----------------------------------|----|
| ORB TECH DLX (1.005-293.0) | 2 |
| 10 BOTTLE HOLDER (0.250-006.0) | 3 |
| 20 DECK (0.250-007.0) | 5 |
| 30 HANDLE - LATCH (0.250-008.0) | 7 |
| 40 HANDLE - LOWER (0.250-009.0) | 9 |
| 50 HANDLE - MIDDLE (0.250-010.0) | 11 |
| 60 HANDLE - UPPER (0.250-011.0) | 13 |
| 70 MOTOR (0.250-012.0) | 15 |
| 80 NOZZLE (0.250-013.0) | 17 |
| 90 PAD (0.250-014.0) | 19 |
| 100 SOLUTION (0.250-015.0) | 21 |

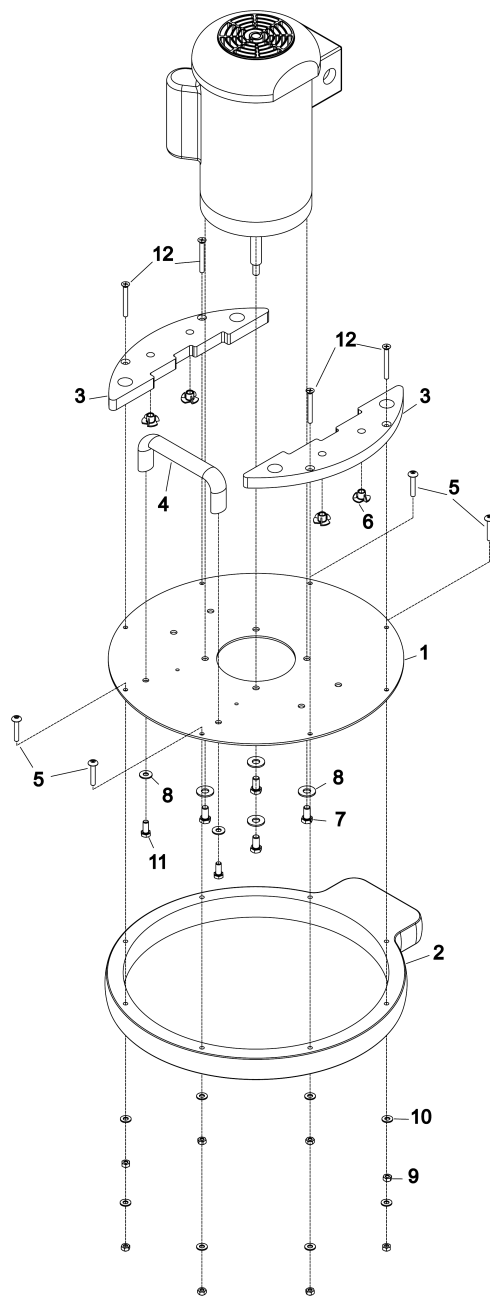
ORB TECH DLX (1.005-293.0)

| POS | Article no. | Description | Quantity | Unit |
|-----|-------------|-----------------|----------|------|
| 10 | 0.250-006.0 | BOTTLE HOLDER | 1.000 | ST |
| 20 | 0.250-007.0 | DECK | 1.000 | ST |
| 30 | 0.250-008.0 | HANDLE - LATCH | 1.000 | ST |
| 40 | 0.250-009.0 | HANDLE - LOWER | 1.000 | ST |
| 50 | 0.250-010.0 | HANDLE - MIDDLE | 1.000 | ST |
| 60 | 0.250-011.0 | HANDLE - UPPER | 1.000 | ST |
| 70 | 0.250-012.0 | MOTOR | 1.000 | ST |
| 80 | 0.250-013.0 | NOZZLE | 1.000 | ST |
| 90 | 0.250-014.0 | PAD | 1.000 | ST |
| 100 | 0.250-015.0 | SOLUTION | 1.000 | ST |



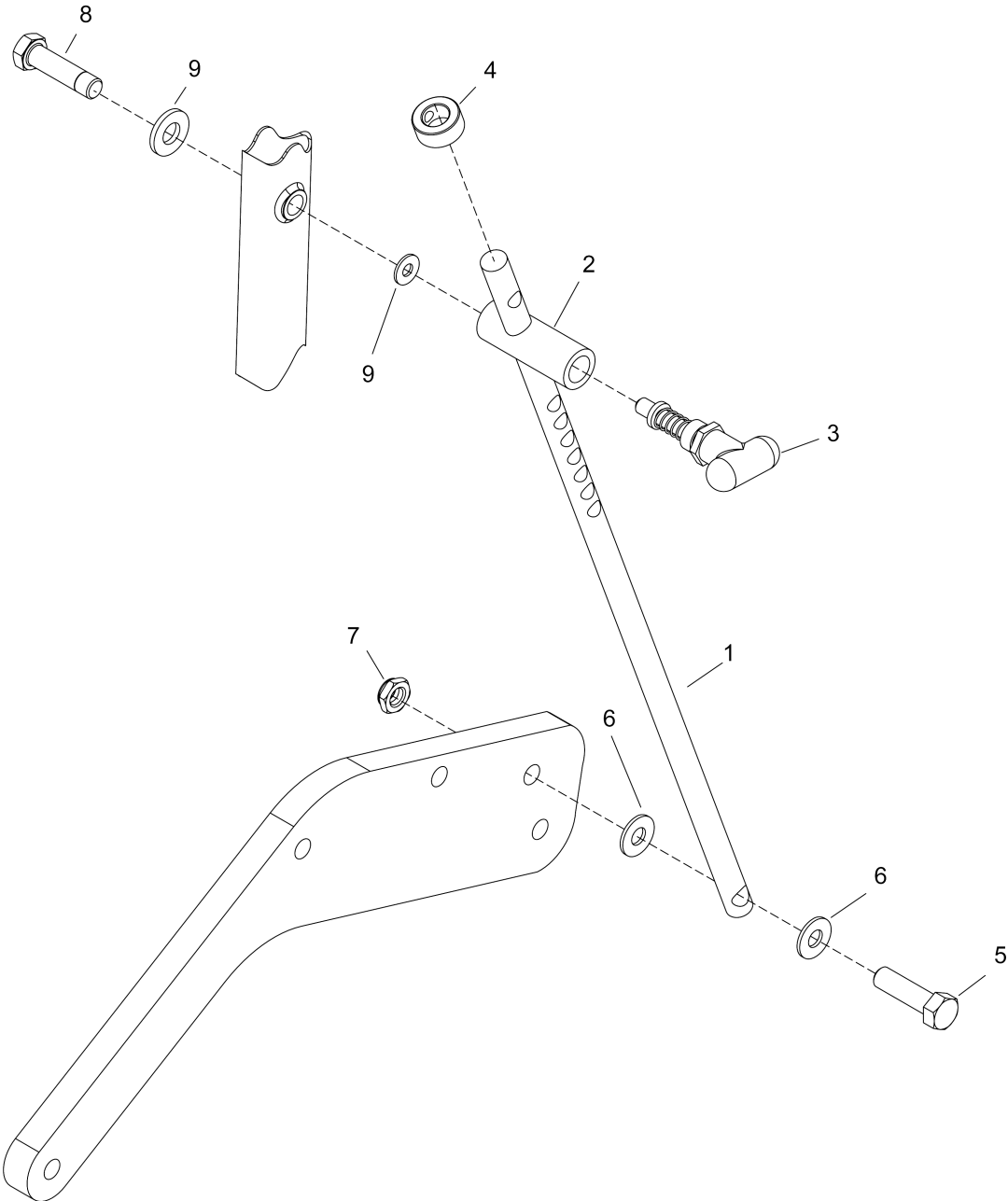
10 BOTTLE HOLDER (0.250-006.0)

| POS | Article no. | Description | Quantity | Unit |
|-----|-------------|---|----------|------|
| 1 | 8.637-643.0 | CAGE ASSY, BOTTLE HOLDER | 1.000 | ST |
| 2 | 8.637-644.0 | SPRING, BOTTLE HOLDER | 2.000 | ST |
| 3 | 8.637-645.0 | DAMPER, RUBBER | 2.000 | ST |
| 4 | 8.637-472.0 | BOTTLE, CARTRIDGE, 2.5 GAL | 1.000 | ST |
| 5 | 8.637-646.0 | CAP, BOTTLE | 1.000 | ST |
| 6 | 8.637-701.0 | SCREW, 1/2-13 X 4.38 HH STL ZNPLT | 2.000 | ST |
| 7 | 8.637-702.0 | WASHER, NYLON, CAGE | 10.000 | ST |
| 8 | 8.637-703.0 | WASHER, 5/8 X 1.75 X .134 FLT STL ZNPLT | 4.000 | ST |
| 9 | 8.600-579.0 | NUT, 1/2-13 HEXTHIN NYLOCK STL ZNPLT | 2.000 | ST |
| 10 | 8.637-754.0 | STRAINER, SOLUTION, BOTTLE | 1.000 | ST |



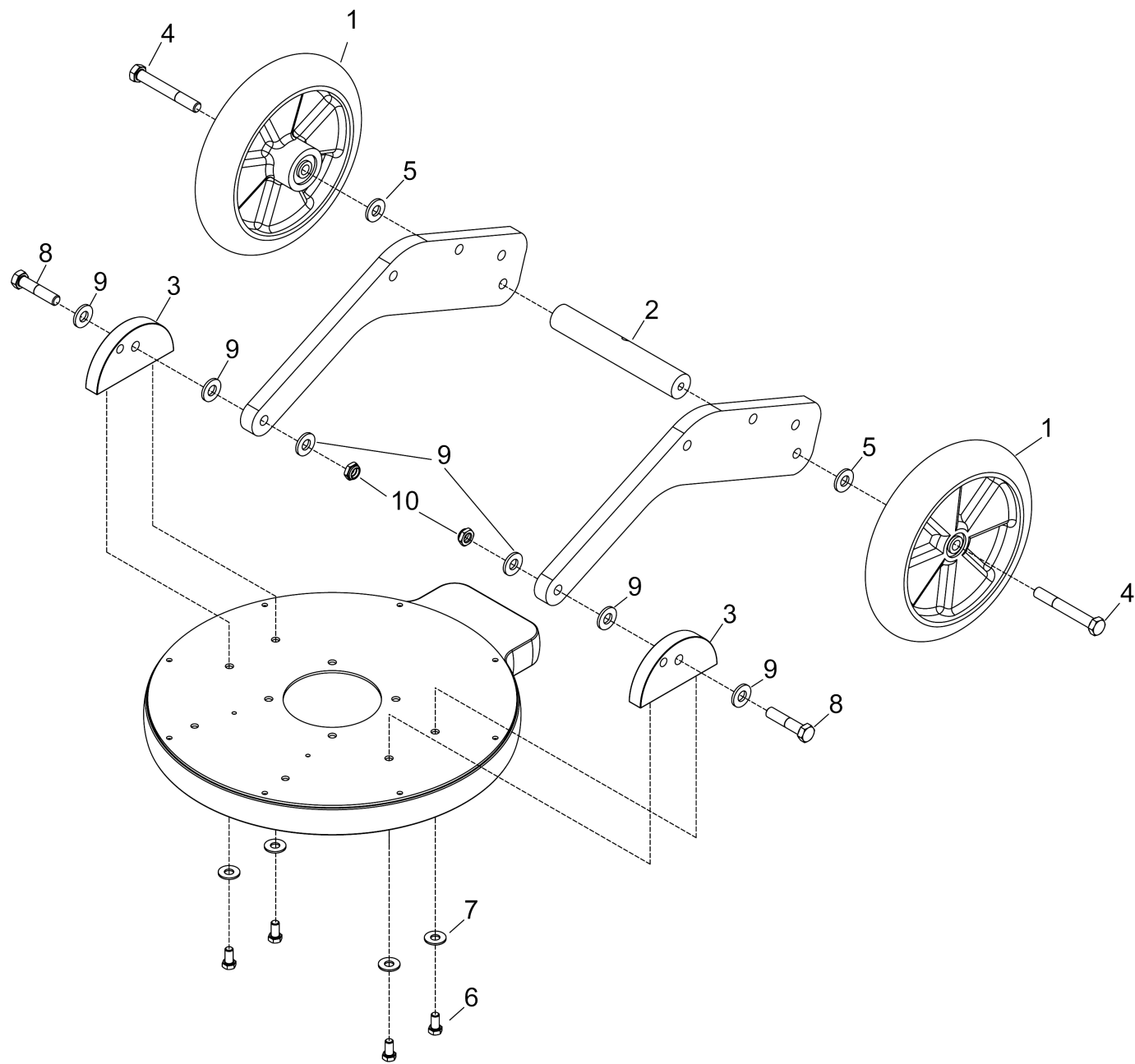
20 DECK (0.250-007.0)

| POS | Article no. | Description | Quantity | Unit |
|-----|-------------|--|----------|------|
| 1 | 8.637-650.0 | PLATE, MOTOR MOUNT | 1.000 | ST |
| 2 | 8.637-651.0 | BUMPER SET | 1.000 | ST |
| 3 | 8.637-652.0 | PLATE, BASE, WEIGHT | 2.000 | ST |
| 4 | 8.637-653.0 | HANDLE, BASE | 1.000 | ST |
| 5 | 8.637-729.0 | SCREW, 1/4-20 x 1.5 PHTRH SS | 4.000 | ST |
| 6 | 8.637-707.0 | NUT, 1/4-20 TEE STL ZNPLT | 4.000 | ST |
| 7 | 8.637-728.0 | SCREW, 3/8-16 X .75 HH STL GRD8 YL ZNPLT | 4.000 | ST |
| 8 | 8.627-951.0 | WASHER, 3/8 FLT STL ZNPLT | 6.000 | ST |
| 9 | 8.637-710.0 | NUT 1/4-20 HEXLK STL ZNPLT | 8.000 | ST |
| 10 | 8.627-033.0 | WASHER, 1/4 STL ZNPLT | 8.000 | ST |
| 11 | 8.637-712.0 | SCREW, 5/16-18 X .75 HH STL ZNPLT | 2.000 | ST |
| 12 | 8.637-706.0 | SCREW, 1/4-20 X 2.25 PHFLH STL ZNPLT | 4.000 | ST |



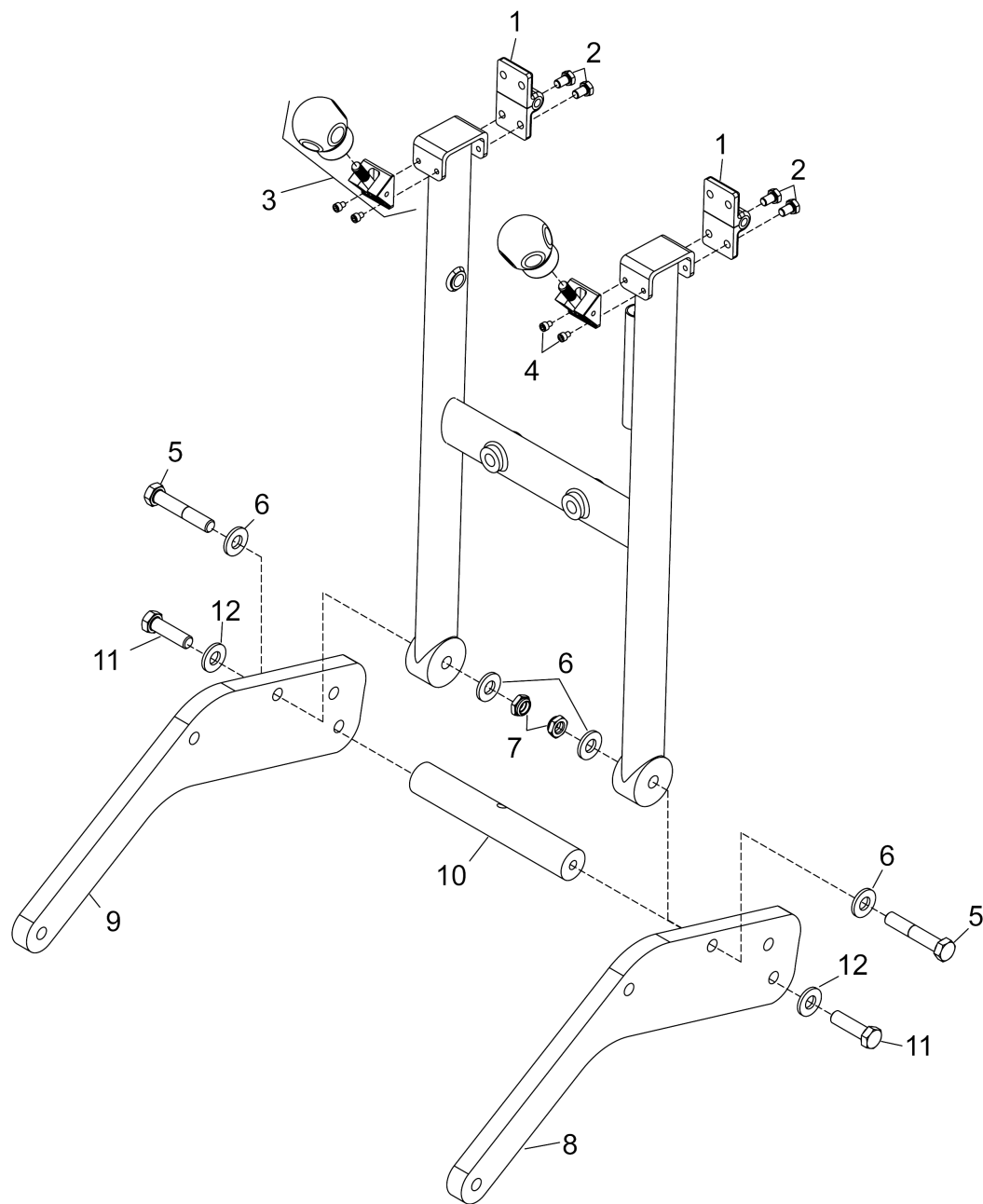
30 HANDLE - LATCH (0.250-008.0)

| POS | Article no. | Description | Quantity | Unit |
|-----|-------------|--------------------------------------|----------|------|
| 1 | 8.637-639.0 | ROD, HANDLE | 1.000 | ST |
| 2 | 8.637-640.0 | LATCH, BODY, PULL | 1.000 | ST |
| 3 | 8.637-641.0 | LATCH, PULL | 1.000 | ST |
| 4 | 8.637-642.0 | COLLAR, HANDLE LATCH | 1.000 | ST |
| 5 | 8.637-696.0 | SCREW, 1/2-13 X 1.75 HH STL ZNPLT | 1.000 | ST |
| 6 | 8.637-697.0 | WASHER, 1/2 NYL | 2.000 | ST |
| 7 | 8.600-579.0 | NUT, 1/2-13 HEXTHIN NYLOCK STL ZNPLT | 1.000 | ST |
| 8 | 8.637-692.0 | SCREW, 1/2-13 X 2 HH STL ZNPLT | 1.000 | ST |
| 9 | 8.637-700.0 | WASHER, 1/2 NYL | 2.000 | ST |



40 HANDLE - LOWER (0.250-009.0)

| POS | Article no. | Description | Quantity | Unit |
|-----|-------------|--|----------|------|
| 1 | 8.637-636.0 | WHEEL, 10" | 2.000 | ST |
| 2 | 8.637-637.0 | ROD, WHEEL | 1.000 | ST |
| 3 | 8.637-638.0 | EARS, HANDLE, BASE PLATE | 2.000 | ST |
| 4 | 8.637-694.0 | SCREW 1/2-13 X 3.75 HH STL ZNPLT | 2.000 | ST |
| 5 | 8.637-695.0 | WASHER, NYLON, WHEEL | 2.000 | ST |
| 6 | 8.637-728.0 | SCREW, 3/8-16 X .75 HH STL GRD8 YL ZNPLT | 4.000 | ST |
| 7 | 8.627-951.0 | WASHER, 3/8 FLT STL ZNPLT | 4.000 | ST |
| 8 | 8.637-730.0 | SCREW, 1/2-13 X 2.25 HH STL ZNPLT | 2.000 | ST |
| 9 | 8.637-731.0 | WASHER, NYLON, ARMS TO EAR | 6.000 | ST |
| 10 | 8.600-579.0 | NUT, 1/2-13 HEXTHIN NYLOCK STL ZNPLT | 2.000 | ST |

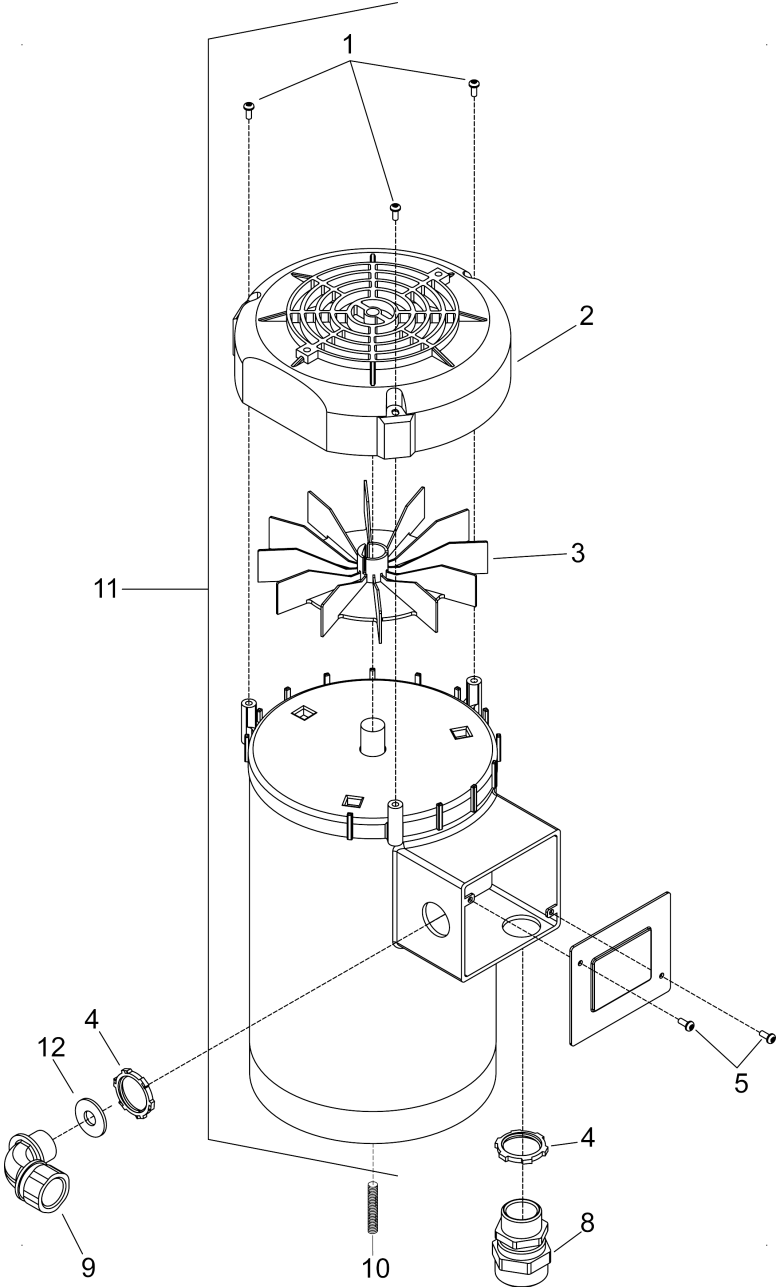


50 HANDLE - MIDDLE (0.250-010.0)

| POS | Article no. | Description | Quantity | Unit |
|-----|-------------|--------------------------------------|----------|------|
| 1 | 8.637-628.0 | HINGE, HANDLE | 2.000 | ST |
| 2 | 8.637-635.0 | SCREW, 5/16-24 X .5 HHMS STL ZNPLT | 8.000 | ST |
| 3 | 8.637-629.0 | LATCH, LOWER ASM, HANDLE | 2.000 | ST |
| 4 | 8.637-687.0 | SCREW, 10-32 X .25 SCHCS STL ZNPLT | 4.000 | ST |
| 5 | 8.637-689.0 | SCREW, 1/2-13 X 2.38 HH STL ZNPLT | 2.000 | ST |
| 6 | 8.637-690.0 | WASHER, NYLON | 4.000 | ST |
| 7 | 8.600-579.0 | NUT, 1/2-13 HEXTHIN NYLOCK STL ZNPLT | 2.000 | ST |
| 8 | 8.637-631.0 | PLATE, ARMS, LIFT, LH | 1.000 | ST |
| 9 | 8.637-632.0 | PLATE, ARMS, LIFT, RH | 1.000 | ST |
| 10 | 8.637-633.0 | ROD, AXLE, SUPPORT | 1.000 | ST |
| 11 | 8.637-692.0 | SCREW, 1/2-13 X 2 HH STL ZNPLT | 2.000 | ST |
| 12 | 8.637-693.0 | WASHER, NYLON, ARM SUPPORT | 2.000 | ST |

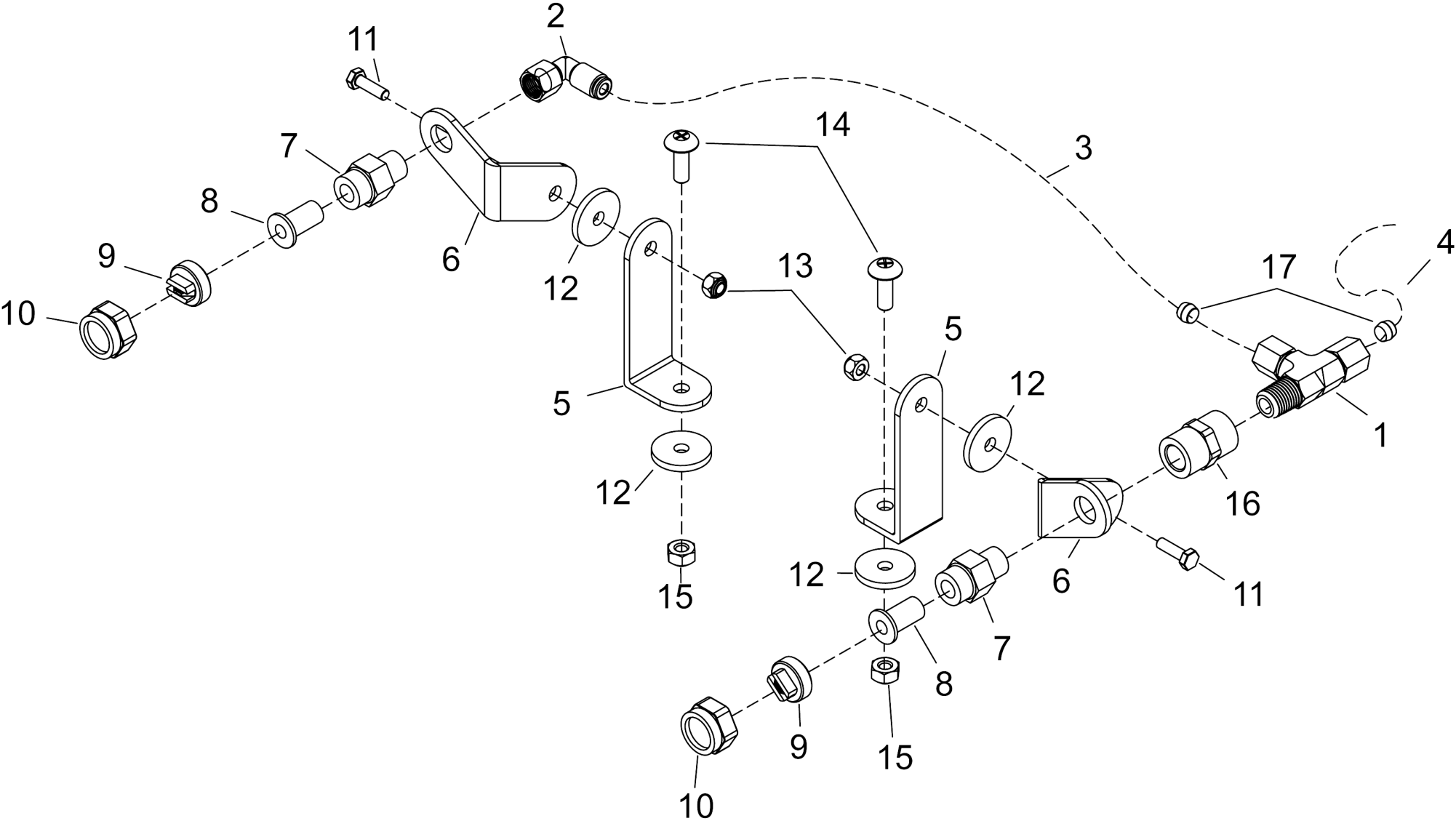
60 HANDLE - UPPER (0.250-011.0)

| POS | Article no. | Description | Quantity | Unit | Remark |
|-----|-------------|------------------------------------|----------|------|-----------|
| - | 8.637-737.0 | HARNESS, MAIN, HANDLE | 1.000 | ST | NOT SHOWN |
| - | 8.637-626.0 | HARNESS, ON/OFF SWITCH | 1.000 | ST | NOT SHOWN |
| - | 8.637-625.0 | HARNESS, SPRAYER SWITCH | 1.000 | ST | NOT SHOWN |
| 1 | 8.637-615.0 | HANDLE ASM, UPPER, W/ELEC BOX | 1.000 | ST | |
| 2 | 8.637-513.0 | SWITCH, DP, 2 POS, ROCKER, SPR | 1.000 | ST | |
| 3 | 8.637-512.0 | SWITCH, DP, 2 POS, ROCKER | 1.000 | ST | |
| 4 | 8.637-514.0 | BREAKER, 20A 125/250 VAC 32VDC | 1.000 | ST | |
| 5 | 8.637-616.0 | PLATE, COVER, ELECT. BOX | 1.000 | ST | |
| 6 | 8.637-618.0 | COVER, TUBE, HANDLE | 2.000 | ST | |
| 7 | 8.637-685.0 | SCREW, 6-20 X .375 PHPNH STL ZNPLT | 2.000 | ST | |
| 8 | 8.637-686.0 | SCREW, ELECT BOX | 4.000 | ST | |
| 9 | 8.637-619.0 | STRAIN RELIEF, ELEC. BOX | 1.000 | ST | |
| 10 | 8.637-687.0 | SCREW, 10-32 X .25 SCHCS STL ZNPLT | 4.000 | ST | |
| 11 | 8.637-620.0 | STRAIN RELIEF, POWER CORD | 1.000 | ST | |
| 12 | 8.637-621.0 | POWER CORD, HANDLE | 1.000 | ST | |
| 13 | 8.637-623.0 | VELCRO, TERMINAL STRIP | 1.000 | ST | |
| 14 | 8.637-624.0 | TERMINAL STRIP | 1.000 | ST | |
| 15 | 8.637-622.0 | POWER CORD, 50' 110V | 1.000 | ST | |
| 16 | 8.637-736.0 | NUT, 1/2 CORD GRIP | 1.000 | ST | |
| 17 | 8.637-748.0 | SCREW, 8-32 X .375 SLTDHH SS | 2.000 | ST | |



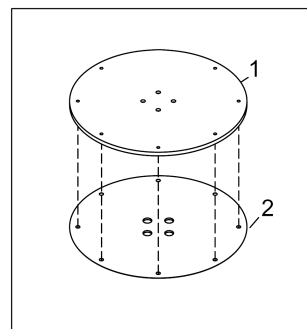
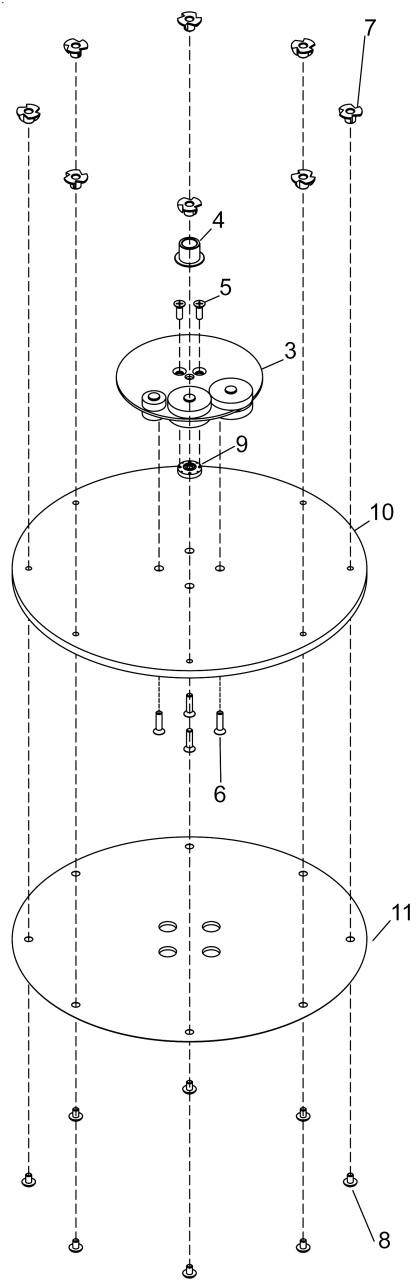
70 MOTOR (0.250-012.0)

| POS | Article no. | Description | Quantity | Unit | Remark |
|-----|-------------|-------------------------------------|----------|------|-----------|
| 1 | 8.637-740.0 | SCREW, 10-32 X .25 SLTDHH STL ZNPLT | 3.000 | ST | |
| 2 | 8.637-741.0 | COVER, FAN MOTOR | 1.000 | ST | |
| 3 | 8.637-742.0 | FAN MOTOR | 1.000 | ST | |
| 4 | 8.637-743.0 | NUT, 3/4 CONDUIT | 2.000 | ST | |
| 5 | 8.637-744.0 | SCREW, MOTOR LID | 2.000 | ST | |
| 6 | 8.637-745.0 | CORD, BLUE PLUG, 100-120V | 1.000 | ST | NOT SHOWN |
| 7 | 8.637-746.0 | CORD, BLK PLUG, 100-120V | 1.000 | ST | NOT SHOWN |
| 8 | 8.637-654.0 | CORD GRIP, 3/4" | 1.000 | ST | |
| 9 | 8.637-655.0 | CORD GRIP, 90 DEG, MOTOR | 1.000 | ST | |
| 10 | 8.637-751.0 | SCREW, 3/8-24 X 1.5 SCHSET BLKOX | 1.000 | ST | |
| 11 | 8.637-649.0 | MOTOR, 110/220V, 1750 RPM | 1.000 | ST | |
| 12 | 8.637-750.0 | WASHER, 7/8 BLKOX | 1.000 | ST | |



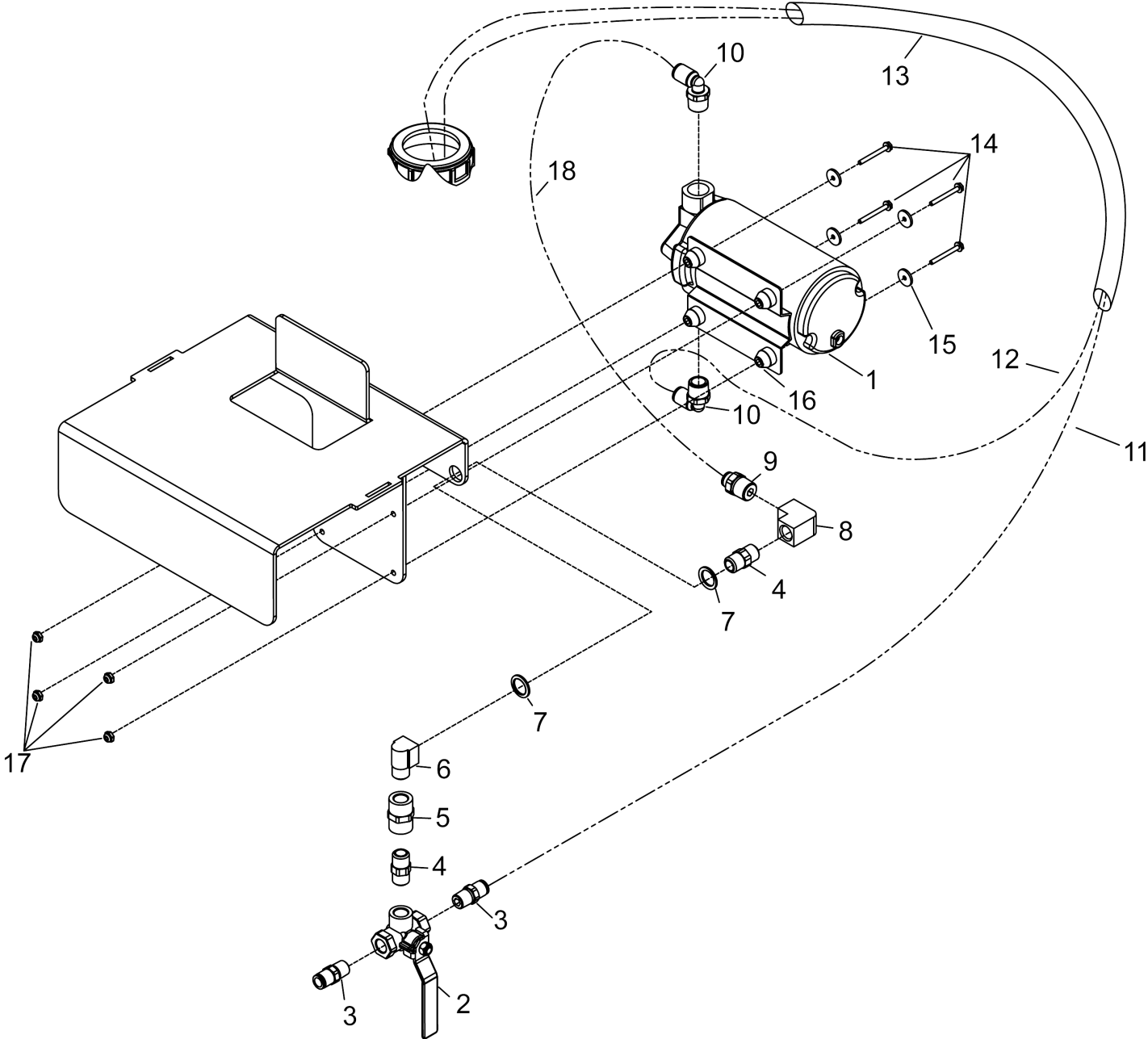
80 NOZZLE (0.250-013.0)

| POS | Article no. | Description | Quantity | Unit | Remark |
|-----|-------------|-------------------------------------|----------|------|-------------------------------|
| 1 | 8.637-675.0 | FITTING, TEE, SPRAY NOZZLES | 1.000 | ST | |
| 2 | 8.637-676.0 | FITTING, 90, SPRAY NOZZLES | 1.000 | ST | |
| 3 | 8.637-677.0 | HOSE, SPRAY NOZZLES | 1.000 | ST | |
| 4 | 8.637-678.0 | HOSE, SPRAY NOZZLES CAGE | 1.000 | ST | |
| 5 | 8.637-680.0 | PLATE, ANGLE, NOZZLE | 2.000 | ST | |
| 6 | 8.637-679.0 | PLATE, ANGLE, NOZZLE BASE | 1.000 | ST | CONTAINS LEFT AND RIGHT PLATE |
| 7 | 8.637-681.0 | COUPLER, FILTER | 1.000 | ST | |
| 8 | 8.637-510.0 | STRAINER, CHECK VALVE | 2.000 | ST | |
| 9 | 8.637-682.0 | NOZZLE, SPRAYER | 2.000 | ST | |
| 10 | 8.637-683.0 | NOZZLE, RETAINER | 2.000 | ST | |
| 12 | 8.637-723.0 | WASHER, SPRAY JET ARM | 2.000 | ST | |
| 13 | 8.600-564.0 | NUT, 10-32 HEX NYLOCK STL GR2 ZNPLT | 2.000 | ST | |
| 14 | 8.627-764.0 | SCREW, 1/4-20 X .75 PHTRHMS SS | 2.000 | ST | |
| 15 | 8.600-564.0 | NUT, 10-32 HEX NYLOCK STL GR2 ZNPLT | 2.000 | ST | |
| 16 | 8.637-684.0 | COUPLER, NOZZLE BASE PLATE | 1.000 | ST | |
| 17 | 8.637-739.0 | SLEEVE, COMPRESSION FITTING | 2.000 | ST | |



90 PAD (0.250-014.0)

| POS | Article no. | Description | Quantity | Unit | Remark |
|-----|-------------|--|----------|------|-------------------|
| 1 | 8.637-657.0 | DRIVER, DISC, 15" | 1.000 | ST | |
| 2 | 8.637-658.0 | DRIVER, VELCRO PLATE, 15" | 1.000 | ST | |
| 3 | 8.639-775.0 | ASSY, COUNTERWEIGHT, 17 DISK | 1.000 | ST | INCLUDES ITEM #9 |
| 4 | 8.637-733.0 | SHAFT SUPPORT | 1.000 | ST | |
| 5 | 8.637-716.0 | SCREW, 1/4-20 X .75 PHFLHMS SS | 2.000 | ST | |
| 6 | 8.637-717.0 | SCREW, 1/4-20 X 1 PHFLH SS | 4.000 | ST | |
| 7 | 8.637-707.0 | NUT, 1/4-20 TEE STL ZNPLT | 8.000 | ST | |
| 8 | 8.637-747.0 | SCREW, 1/4-20 X .375 PHTRH SS | 8.000 | ST | |
| 9 | 8.637-511.0 | ASSY, BEARING, 17 DISC | 1.000 | ST | |
| 10 | 8.640-055.0 | DRIVER, DISK WITH VELCRO, 17", ALUMINUM | 1.000 | ST | INCLUDES ITEM #11 |
| 11 | | 17" Multifloor driver replmt velcro plat | 1.000 | ST | |



100 SOLUTION (0.250-015.0)

| POS | Article no. | Description | Quantity | Unit |
|-----|-------------|--------------------------------------|----------|------|
| 1 | 8.637-661.0 | PUMP, 90 PSI, 120V | 1.000 | ST |
| 2 | 8.637-662.0 | VALVE, FLOW CONTROL, 3-WAY | 1.000 | ST |
| 3 | 8.637-663.0 | COUPLER, QD, FLOW CONTROL | 2.000 | ST |
| 4 | 8.637-664.0 | NIPPLE, 1/4", HEX | 2.000 | ST |
| 5 | 8.637-665.0 | COUPLER, FLOW CONTROL | 1.000 | ST |
| 6 | 8.637-666.0 | ELBOW, 1/4" | 1.000 | ST |
| 7 | 8.637-718.0 | WASHER, 1/2 STL ZNPLT | 2.000 | ST |
| 8 | 8.637-667.0 | FITTING, ELBOW, 1/4" | 1.000 | ST |
| 9 | 8.637-668.0 | FITTING, GUEST, STRAIGHT | 1.000 | ST |
| 10 | 8.637-669.0 | FITTING, GUEST, 90 DEG | 2.000 | ST |
| 11 | 8.637-670.0 | HOSE, 1/4", BOTTLE CARTRIDGE | 1.000 | ST |
| 12 | 8.637-671.0 | HOSE, 3/8", BOTTLE CARTRIDGE | 1.000 | ST |
| 13 | 8.637-672.0 | HOSE, BOTTLE CARTRIDGE ASSY | 1.000 | ST |
| 14 | 8.637-719.0 | SCREW, 6-32 X 1.25 HEXFLGH STL ZNPLT | 4.000 | ST |
| 15 | 8.637-720.0 | WASHER, PUMP MOUNT | 4.000 | ST |
| 16 | 8.637-673.0 | GROMMET, DAMPER, PUMP | 4.000 | ST |
| 18 | 8.637-674.0 | HOSE, 1/4", PUMP CAGE | 1.000 | ST |